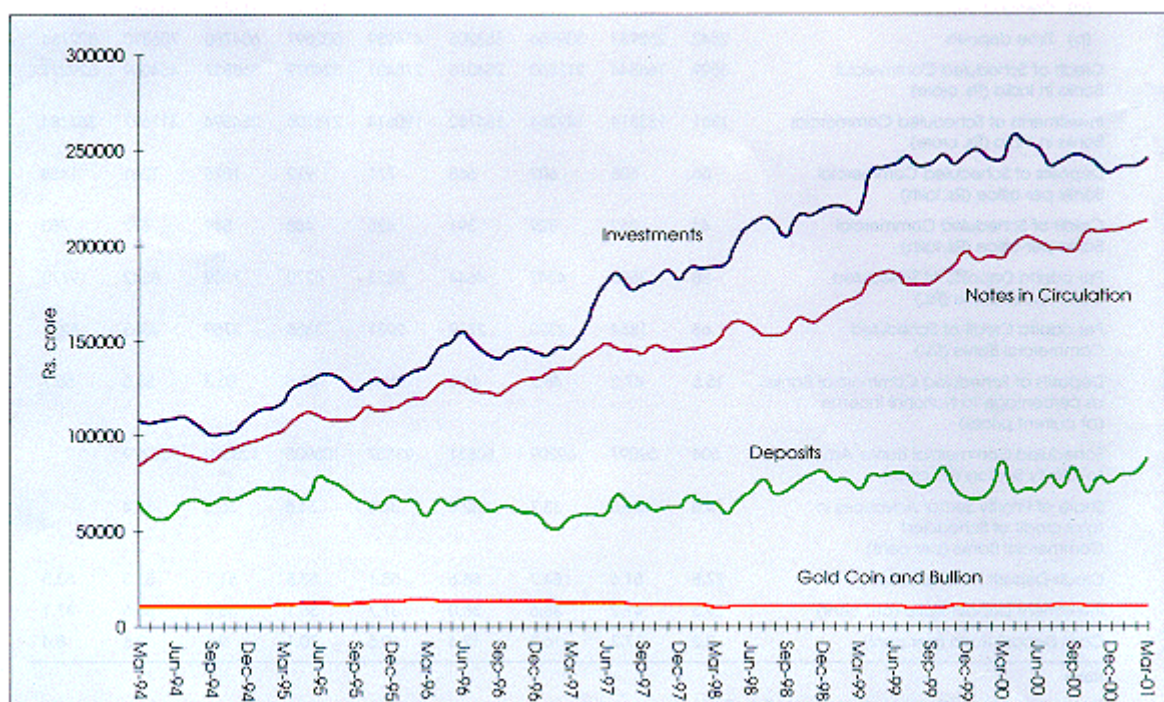
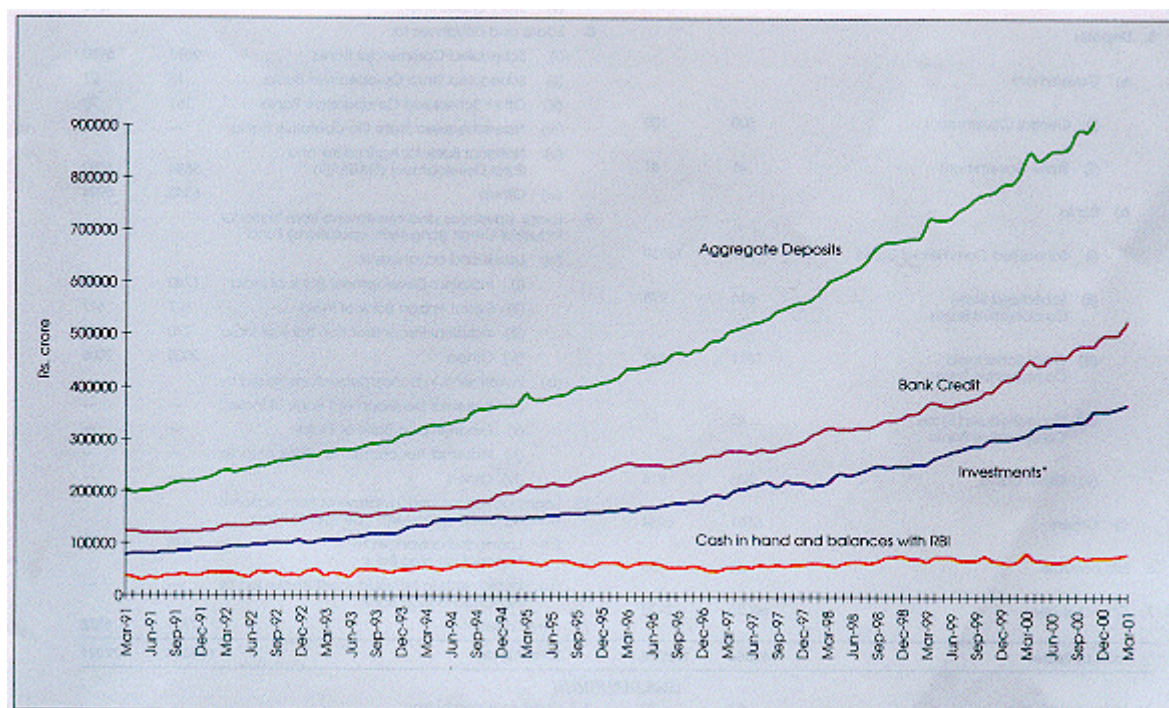


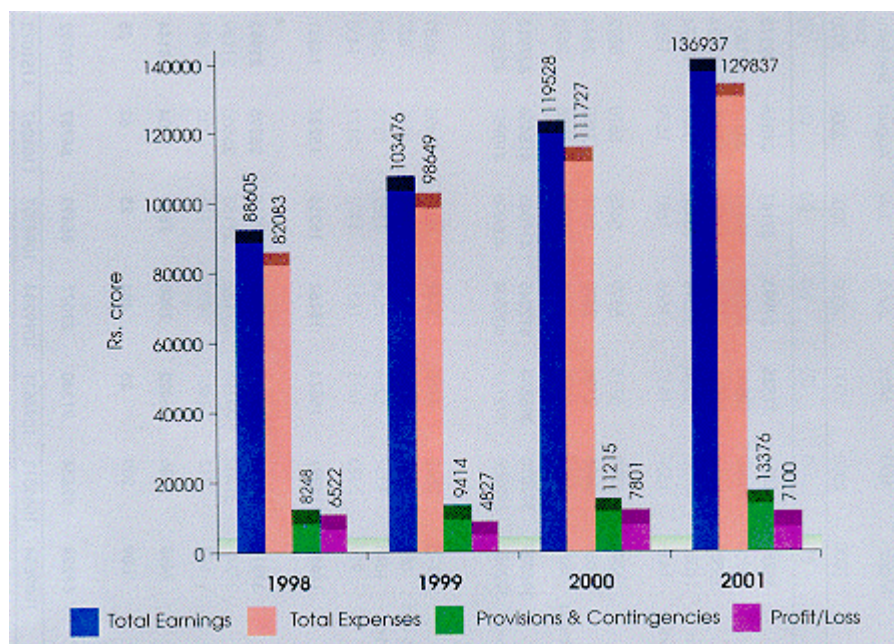
GRAPH - 1
LIABILITIES AND ASSETS OF THE RESERVE BANK OF INDIA: 1999 TO 2001



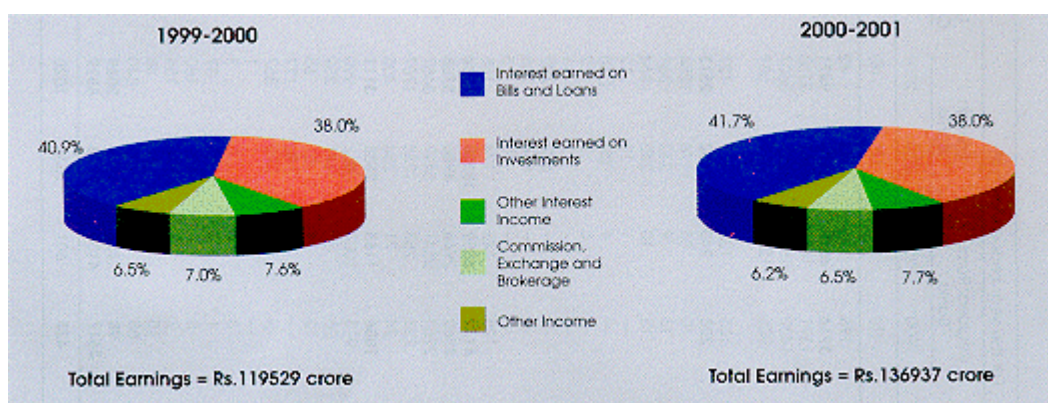
GRAPH - 2
SCHEDULED COMMERCIAL BANKS' BUSINESS IN INDIA : 1991 TO 2001
 (As on the last Friday of Month)



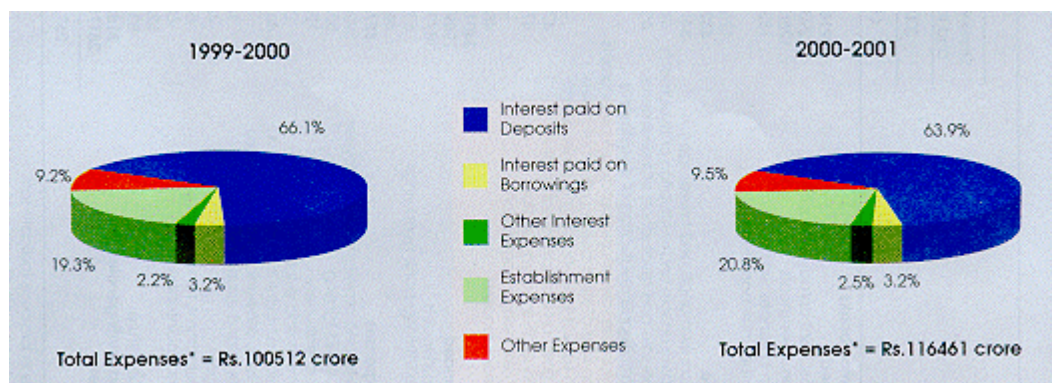
GRAPH -3
EARNINGS, EXPENSES AND PROFITS OF SCHEDULED
COMMERCIAL BANKS - 1997-98 TO 2000 - 01
 (For the year ended March 31)



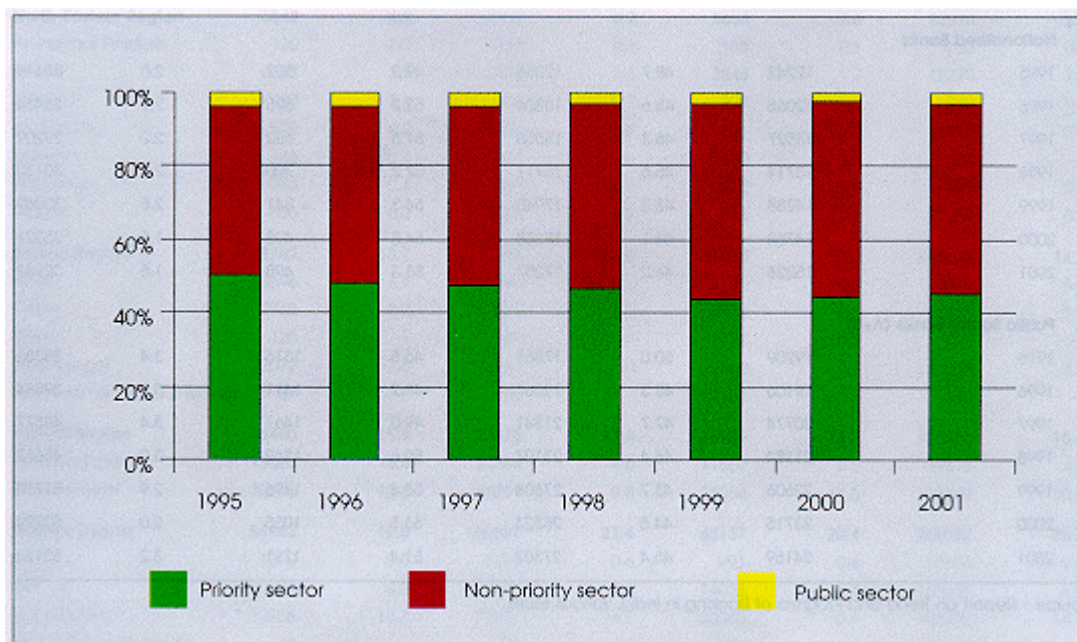
GRAPH - 4
COMPOSITION OF EARNINGS OF SCHEDULED COMMERCIAL BANKS:
1999-2000 AND 2000 - 2001
(For the year ended 31st March)



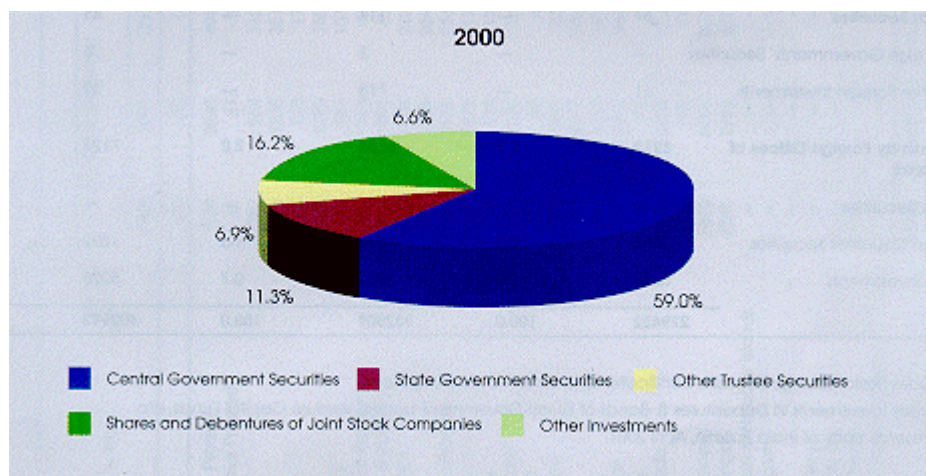
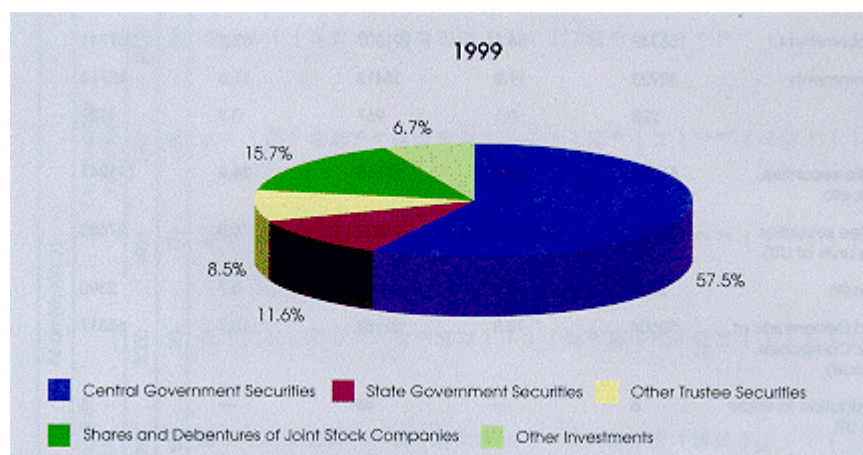
COMPOSITION OF TOTAL EXPENSES* OF SCHEDULED COMMERCIAL BANKS:
1999 - 2000 AND 2000 - 2001
(For the year ended 31st March)



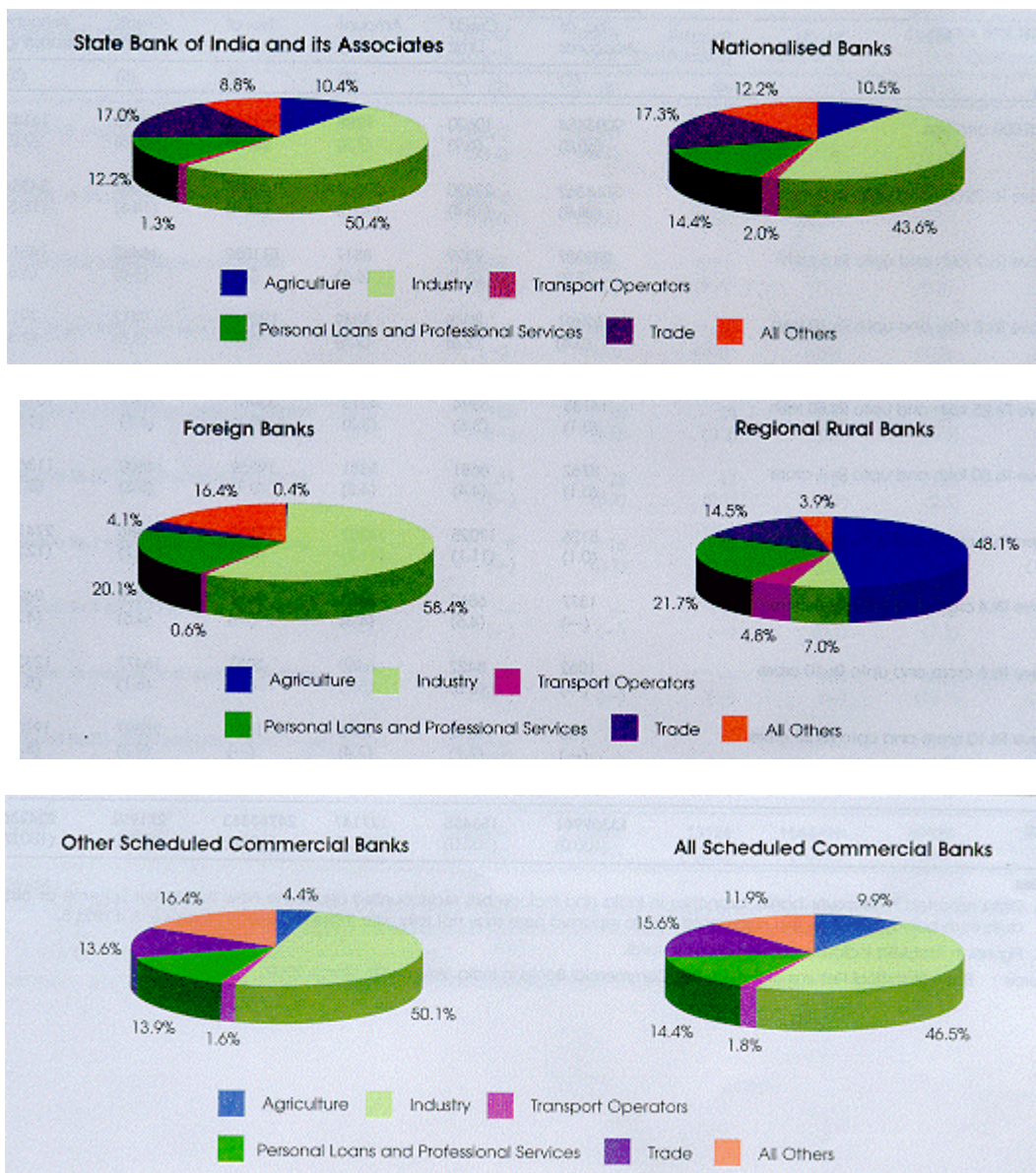
GRAPH - 5
SECTOR-WISE COMPOSITION OF NPAs OF PUBLIC SECTOR BANKS:
1995 TO 2001
(As on March 31)



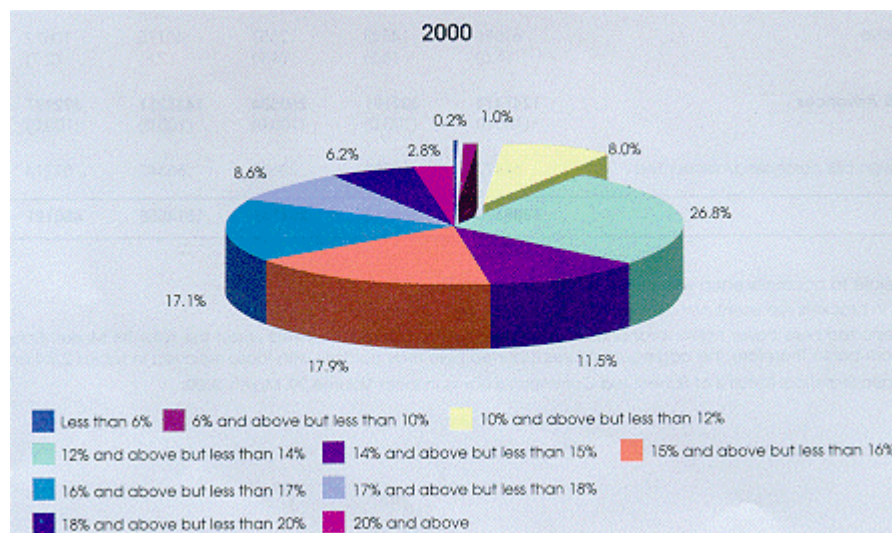
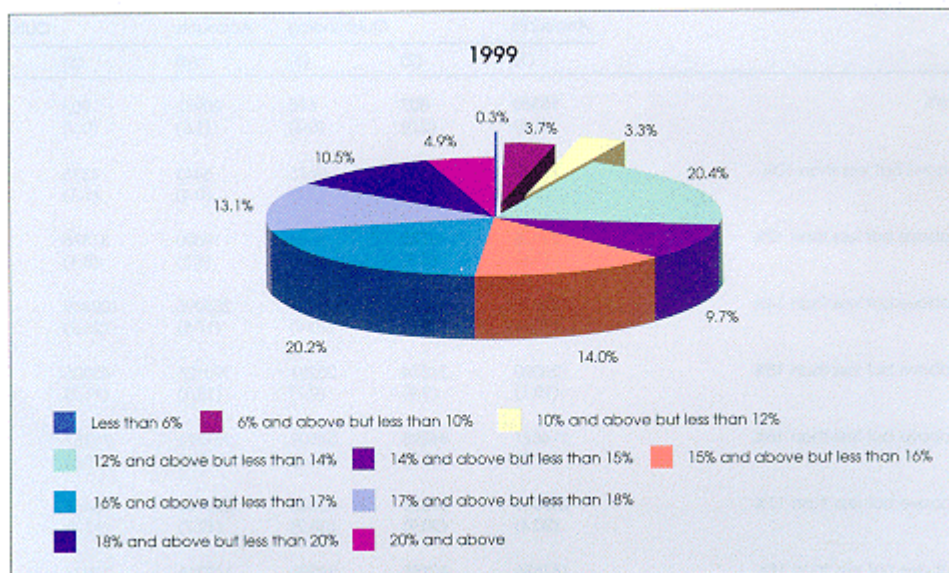
GRAPH -6
COMPOSITION OF INVESTMENTS OF SCHEDULED
COMMERCIAL BANKS - 1999 AND 2000
(As on March 31)



GRAPH -7
OCCUPATION-WISE DISTRIBUTION OF CREDIT OF SCHEDULED COMMERCIAL
BANKS ACCORDING TO BANK GROUPS - 2000
(As on March 31)

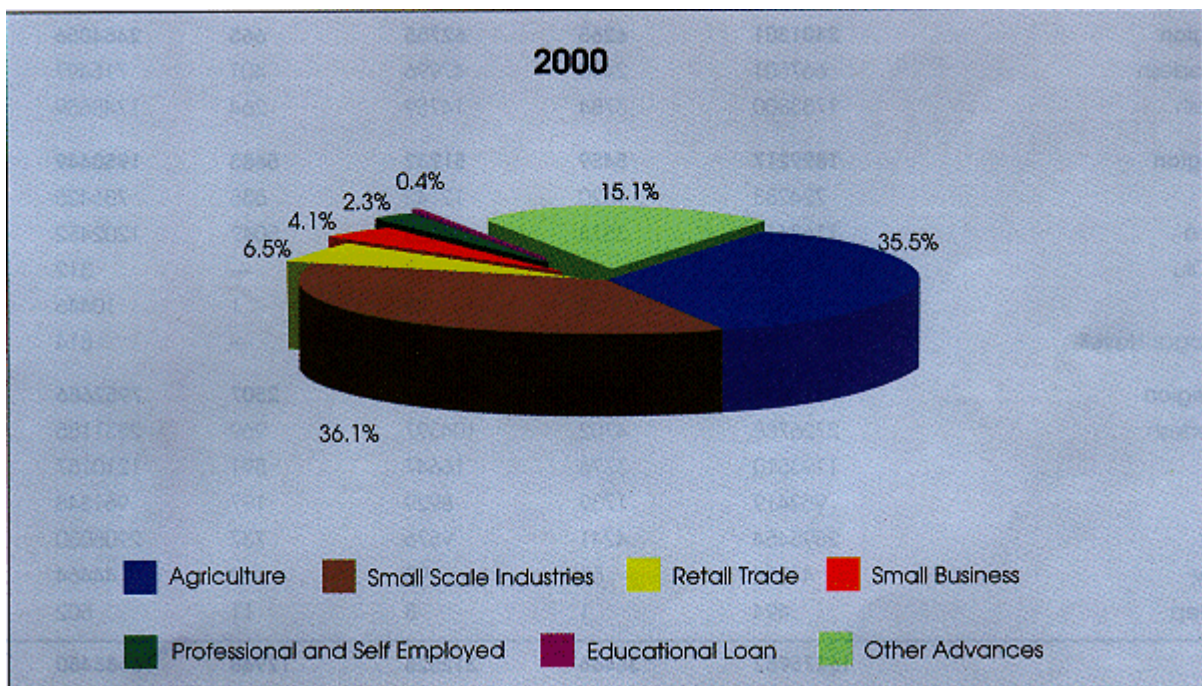
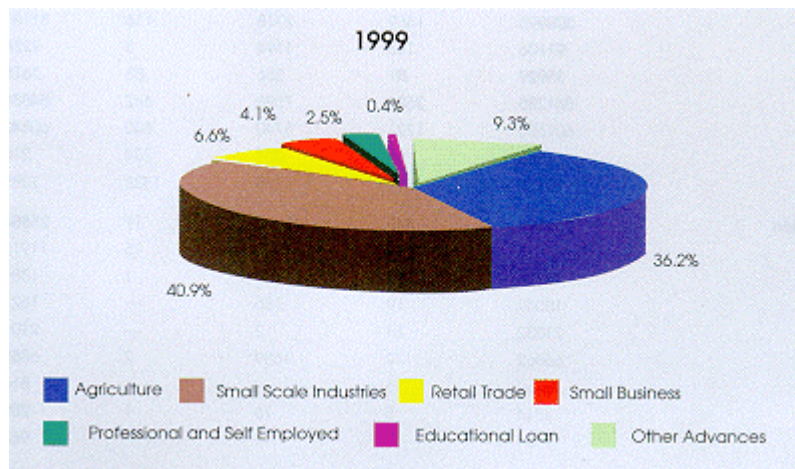


GRAPH -8
DISTRIBUTION OF OUTSTANDING CREDIT OF SCHEDULED COMMERCIAL
BANKS ACCORDING TO INTEREST RATE RANGE - 1999 AND 2000
(As on March 31)

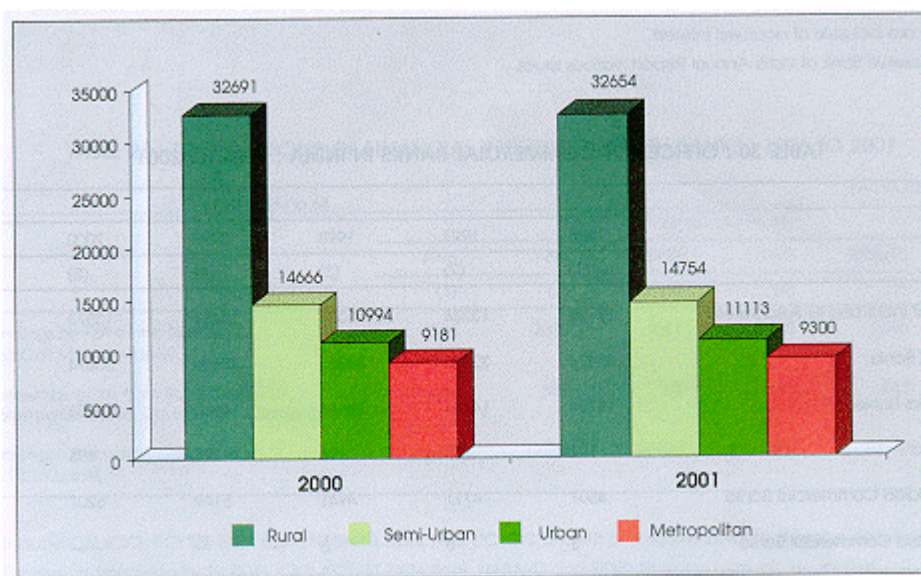


Note : Data for outstanding credit relate to accounts with credit limit of over Rs.2 lakh.

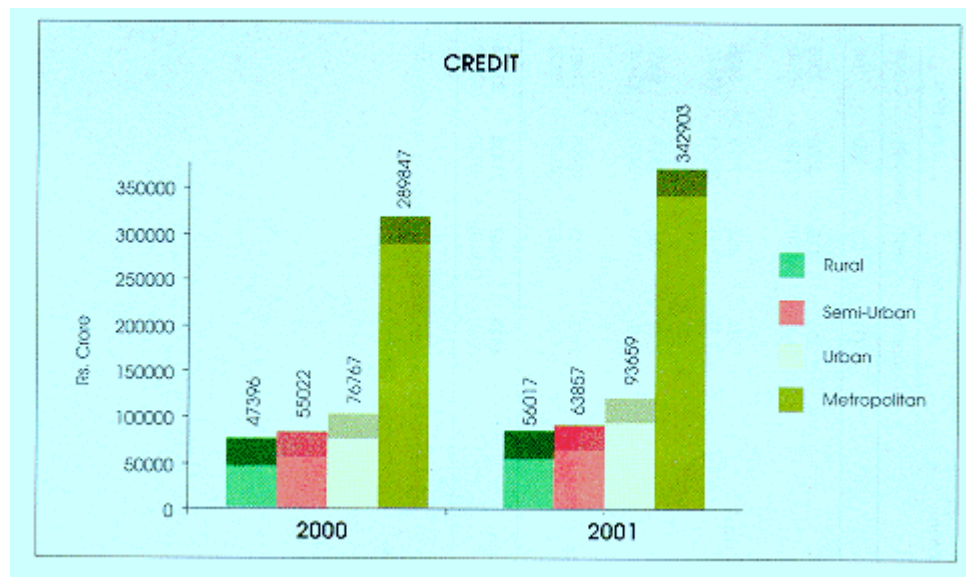
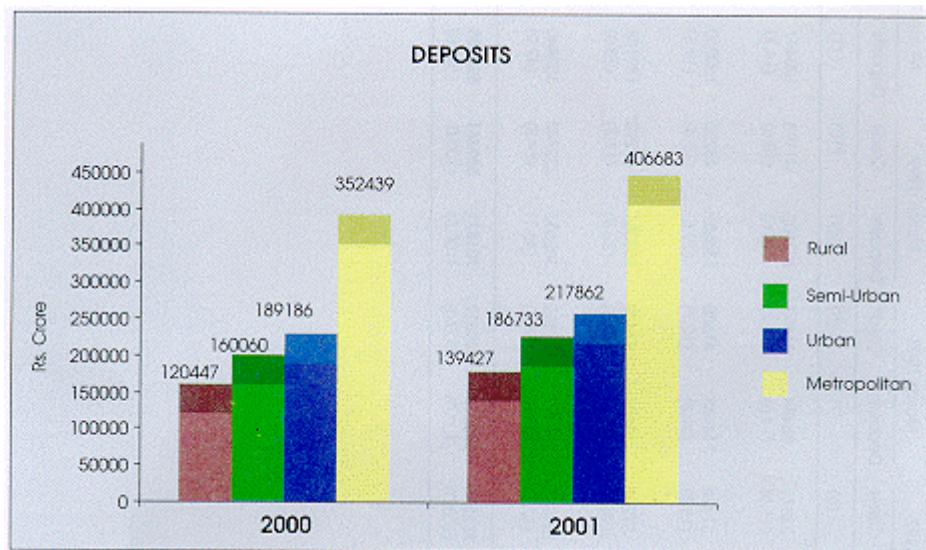
GRAPH - 9
COMPOSITION OF PRIORITY SECTOR ADVANCES OF
PUBLIC SECTOR BANKS - 1999 AND 2000
 (As on the last reporting Friday of March)



GRAPH - 10
POPULATION GROUP-WISE DISTRIBUTION OF NUMBERS OF OFFICES OF
SCHEDULED COMMERCIAL BANKS - 2000 AND 2001
(As on March 31)



GRAPH - 11
POPULATION GROUP-WISE DISTRIBUTION OF SCHEDULED COMMERCIAL
BANKS' DEPOSITS AND CREDIT - 2000 AND 2001
 (As on the last Friday of March)



GRAPH - 12
STATE-WISE DISTRIBUTION OF DEPOSITS AND CREDIT OF SCHEDULED
COMMERCIAL BANKS - 2001
(As on the last Friday of March)

