

Table 18: Distribution of Outstanding Credit of Scheduled Commercial Banks According to Interest Rate Range : 2000 And 2001

(Amount in Rs. crore)

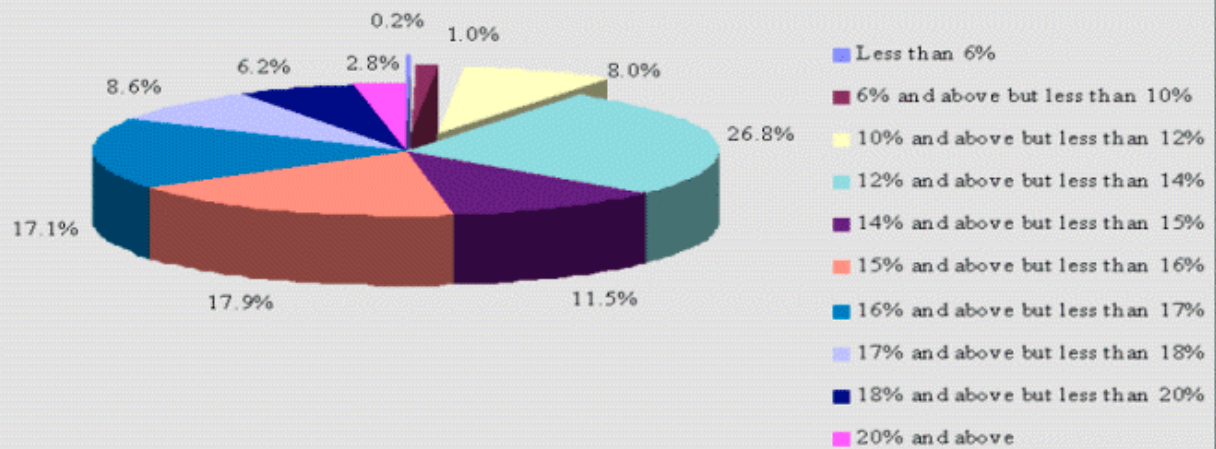
Interest rate range	As on March 31					
	2000			2001		
	No. of Accounts	Credit Limit	Amount Outstanding	No. of Accounts	Credit Limit	Amount Outstanding
(1)	(2)	(3)	(4)	(5)	(6)	
Less than 6%	20932 (1.5)	903 (0.2)	786 (0.2)	18972 (1.0)	825 (0.2)	704 (0.2)
6% and above but less than 10%	6443 (0.4)	4325 (1.1)	3291 (1.0)	5406 (0.3)	2759 (0.6)	2163 (0.6)
10% and above but less than 12%	119690 (8.3)	31876 (8.1)	25452 (7.9)	164262 (8.9)	82363 (16.7)	65741 (17.0)
12% and above but less than 14%	258095 (17.8)	102849 (26.2)	85571 (26.8)	428659 (23.3)	137762 (27.9)	110882 (28.6)
14% and above but less than 15%	190126 (13.1)	45805 (11.7)	36758 (11.5)	290965 (15.8)	63434 (12.9)	48660 (12.6)
15% and above but less than 16%	261321 (18.0)	73157 (18.6)	57179 (17.9)	326733 (17.7)	78613 (15.9)	60848 (15.7)
16% and above but less than 17%	285178 (19.7)	68447 (17.4)	54603 (17.1)	351564 (19.1)	72240 (14.7)	54763 (14.1)
17% and above but less than 18%	149315 (10.3)	32077 (8.2)	27498 (8.6)	120076 (6.5)	25336 (5.1)	20300 (5.2)
18% and above but less than 20%	116936 (8.1)	22867 (5.8)	19877 (6.2)	88664 (4.8)	19208 (3.9)	15749 (4.1)
20% and above	40175 (2.8)	10672 (2.7)	8835 (2.8)	47080 (2.6)	10450 (2.1)	7811 (2.0)
Total loans & advances	1448211 (100.0)	392977 (100.0)	319851 (100.0)	1842381 (100.0)	492990 (100.0)	387620 (100.0)
Inland & foreign bills purchased/discounted	66347	57214	37485	65786	67616	44520
Total	1514558	450191	357336	1908167	560606	432140

Notes :

1. Data relate to accounts each with credit limit over Rs.2 lakh.
 2. Figures in bracket represent per cent share in total loans and advances.
 3. Data reported here cover banks' branches in India and include bills rediscounted under the New Bill Market Scheme as also dues from banks. Therefore, the aggregate figures reported here may not tally with those reported in tables 2,3,4 and 5.
- Source : Basic Statistical Returns of Scheduled Commercial Banks in India, Volume 30, March 2001.

Graph - 8
Distribution of Outstanding Credit of Scheduled Commercial banks According to Interest Rate Range - 2000 and 2001
(As on March 31)

2000



2001

