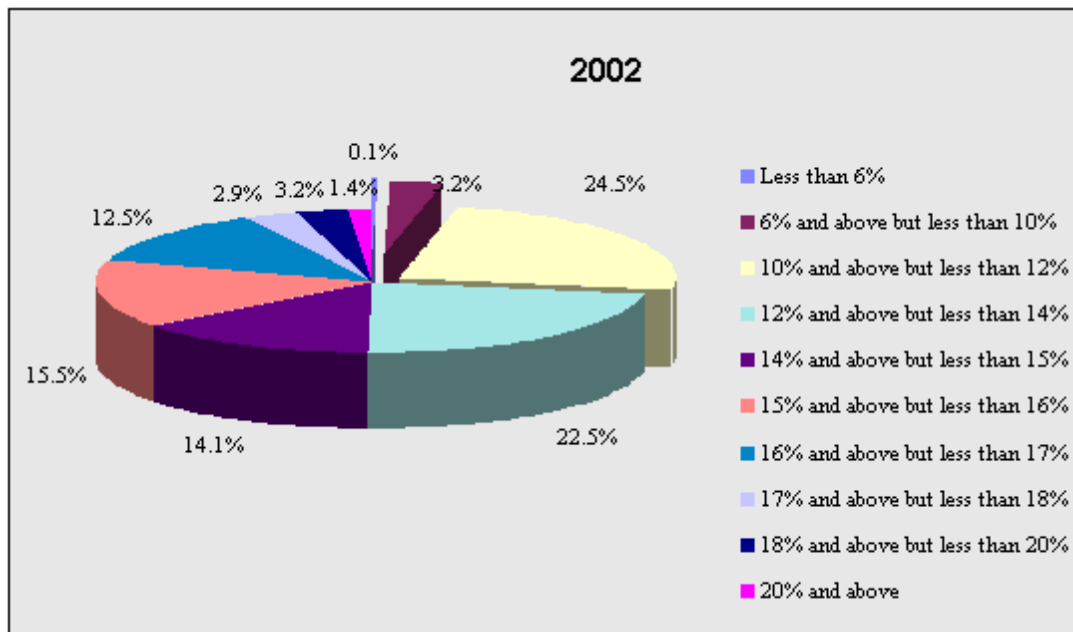
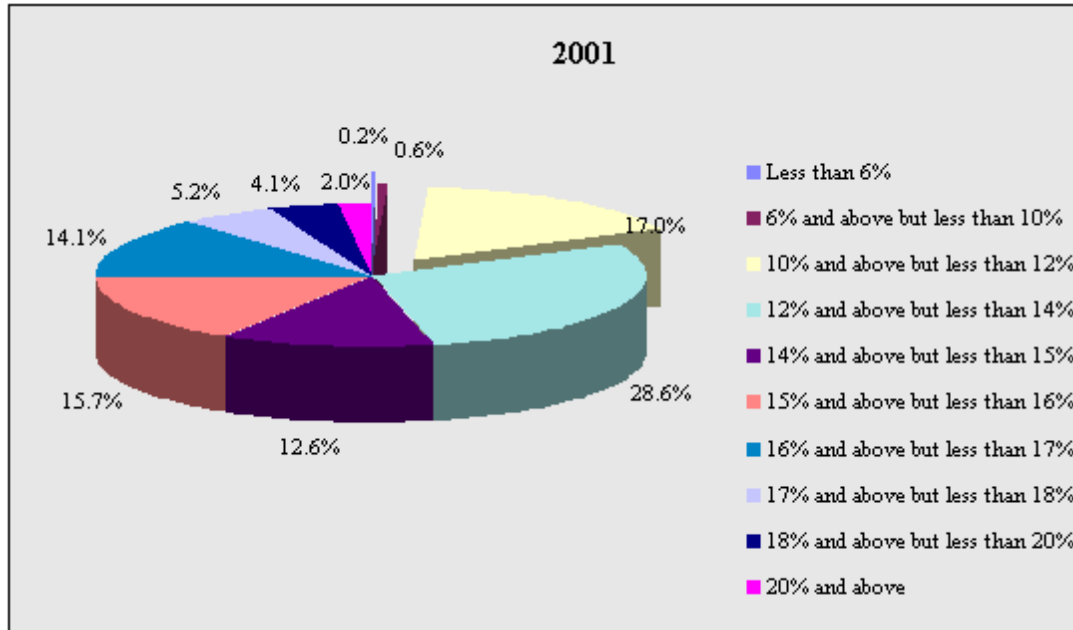


GRAPH - 7

DISTRIBUTION OF OUTSTANDING CREDIT OF SCHEDULED COMMERCIAL BANKS ACCORDING TO INTEREST RATE RANGE - 2001 AND 2002

(As on March 31)



Note: Data for outstanding credit relate to accounts with credit limit of over Rs.2 lakh.