

I. Output

The turnaround in GDP growth witnessed during the first quarter of 2009-10 was sustained during the second quarter, spurred by robust revival in industrial performance and fiscal expenditure driven services activities. The performance of the agricultural sector remained subdued due to the impact of the deficient South-West monsoon, notwithstanding the fact that a major part of the impact would be reflected in the third quarter GDP of the year. The industrial recovery, besides exhibiting acceleration in the last few months, has also become more broad based. Most of the lead indicators of services sector activities also suggest revival in growth momentum.

I.1 The Indian economy exhibited robust turnaround in economic growth in the second quarter (Q2) of 2009-10 in relation to the slowdown witnessed during the second half of 2008-09. The recovery in GDP growth that had started in the first quarter (Q1) gained momentum in Q2 of 2009-10, driven by a strong revival in industrial output and better performance of the services sector. According to the estimates of the Central Statistical Organisation (CSO), real GDP growth, which was 6.1 per cent during Q1 of 2009-10, accelerated to 7.9 per cent in Q2 of 2009-10, which was also higher than 7.7 per cent registered during the corresponding period of 2008-09. The better than expected acceleration in the second quarter placed the real GDP growth during the first half of 2009-10 at 7.0 per cent as compared with 7.8 per cent in the corresponding period of 2008-09 (Table 1.1).

I.2 The real GDP growth was driven mainly by rebound in industrial and services sector

Table 1.1: Growth Rates of Real GDP@

(Per cent)										
Sector	2007-08*	2008-09#	2008-09				2009-10		April-September	
			Q1	Q2	Q3	Q4	Q1	Q2	2008-09	2009-10
1	2	3	4	5	6	7	8	9	10	11
1. Agriculture and Allied Activities	4.9 (17.8)	1.6 (17.0)	3.0	2.7	-0.8	2.7	2.4	0.9	2.9	1.7
2. Industry	7.4 (19.2)	2.6 (18.5)	5.1	4.8	1.6	-0.5	4.2	9.0	5.0	6.6
2.1 Mining and Quarrying	3.3	3.6	4.6	3.7	4.9	1.6	7.9	9.5	4.2	8.7
2.2 Manufacturing	8.2	2.4	5.5	5.1	0.9	-1.4	3.4	9.2	5.3	6.3
2.3 Electricity, Gas & Water Supply	5.3	3.4	2.7	3.8	3.5	3.6	6.2	7.4	3.3	6.8
3. Services	10.8 (63.0)	9.4 (64.5)	10.0	9.8	9.5	8.4	7.7	9.0	9.9	8.3
3.1 Trade, Hotels, Restaurants, Transport, Storage and Communication	12.4	9.0	13.0	12.1	5.9	6.3	8.1	8.5	12.5	8.3
3.2 Financing, Insurance, Real Estate and Business Services	11.7	7.8	6.9	6.4	8.3	9.5	8.1	7.7	6.6	7.9
3.3 Community, Social and Personal services	6.8	13.1	8.2	9.0	22.5	12.5	6.8	12.7	8.6	9.9
3.4 Construction	10.1	7.2	8.4	9.6	4.2	6.8	7.1	6.5	9.0	6.8
4. Real GDP at Factor Cost	9.0	6.7	7.8	7.7	5.8	5.8	6.1	7.9	7.8	7.0

Memo:

(Amount in Rupees crore)

a. Real GDP at Factor Cost (1999-2000)	31,29,717	33,39,375
b. GDP at current market prices	47,23,400	53,21,753

@ : At 1999-2000 Prices.

* : Quick Estimates.

: Revised Estimates.

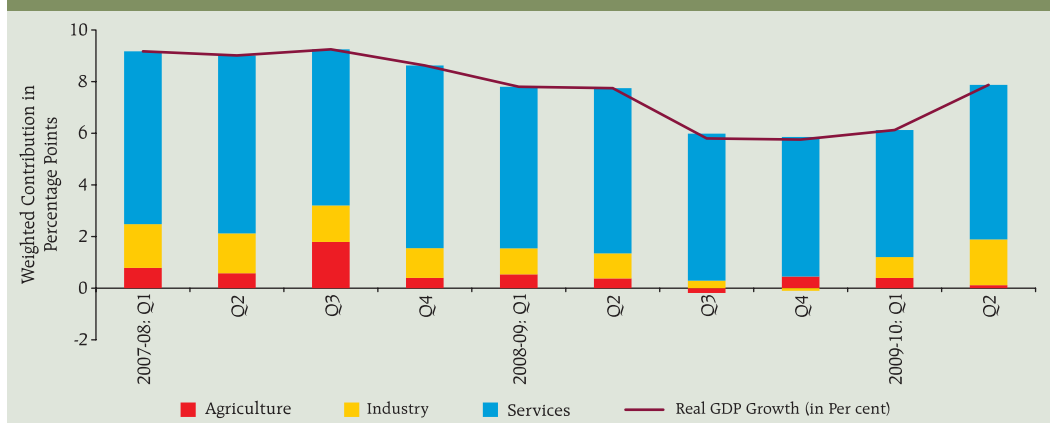
Note : Figures in parentheses indicate shares in real GDP.

Source: Central Statistical Organisation.

growth, after a period of noticeable fall in the wake of the global recession (Chart I.1). Agriculture sector witnessed a deceleration

in growth during the second quarter of 2009-10, partly reflecting the impact of deficient South-West monsoon.

Chart I.1: Sectoral Contributions to Growth



Agricultural Situation

I.3 The South-West monsoon (June-September), which significantly influences the rain dependent production of *kharif* crops, was the weakest in 2009 since 1972. The cumulative rainfall during the season turned out to be 23 per cent below normal, as against 2 per cent below normal during the corresponding period of the previous year. Drought was declared in 316 districts across 13 States, either partially or wholly. The North-East monsoon (October to December 2009) has, however, been satisfactory, with the cumulative rainfall being 8 per cent above normal as compared to 31 per cent below normal during the corresponding period of the previous year. Of the 36 meteorological sub-divisions, cumulative rainfall during North-East monsoon was deficient/scanty/no rain in 13 sub-divisions (30 sub-divisions during the previous year) (Chart I.2). Reservoir levels, an important indicator for making an assessment about agricultural production linked to irrigation, have improved from their lows of around 9 per cent of Full

Reservoir Level (FRL) recorded in early July 2009. As on January 14, 2010, the total live water storage was 48 per cent of the FRL as against 49 per cent during the corresponding period of the preceding year and an average of 46 per cent during the past 10 years.

I.4 The deficient South-West monsoon, along with drought conditions in several parts of the country, adversely impacted the *kharif* sowing, which was about 5.3 per cent lower than the preceding year's sowing. Apart from shortfall in the area sown, erratic rainfall and flash floods in certain states could also have affected the *kharif* yield. The delayed withdrawal of South-West monsoon and the resultant higher moisture retention in the soil, facilitated early *rabi* sowing. Also on account of the good North-East monsoon, the area sown under *rabi* crops (up to January 15, 2010) has been close to last year's levels. Sowing has been particularly high in respect of rice, wheat and pulses (Table 1.2).

I.5 Based on the record level of 233.9 million tonnes of foodgrains production

Chart I.2: Rainfall During South West and North East Monsoons

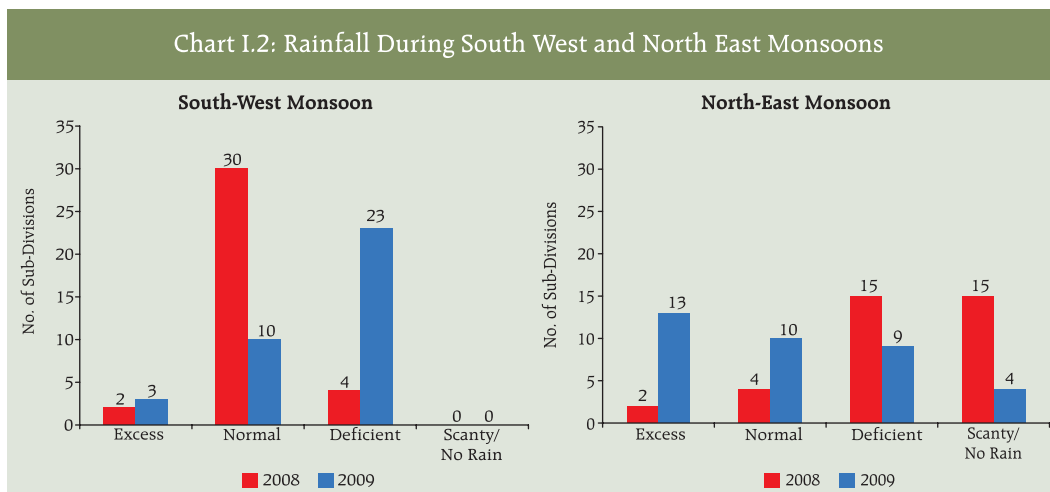


Table 1.2: Progress of Area Sown under *Rabi* Crops

(Million hectares)					
Crop	Normal Area	Area Coverage (as on January 15, 2010)			Percentage Variation
		2008-09	2009-10	Variation	
1	2	3	4	5	6
Rice	4.0	1.1	1.3	0.2	14.8
Wheat	27.1	27.5	27.5	0.0	0.0
Coarse Cereals	6.3	6.6	6.3	-0.4	-5.6
<i>of which:</i>					
Barley	0.6	0.7	0.8	0.0	5.2
Jowar	4.8	4.9	4.5	-0.4	-8.5
Maize	0.9	1.0	1.0	0.0	1.4
Total Pulses	11.9	12.7	13.5	0.7	5.8
Total Oilseeds	9.5	9.2	8.6	-0.6	-6.8
<i>of which:</i>					
Rapeseed & mustard	6.5	6.6	6.4	-0.2	-3.4
Groundnut	0.9	0.6	0.6	0.0	-1.7
Sunflower	1.3	1.1	0.8	-0.3	-26.5
All Crops	58.8	57.2	57.1	-0.1	-0.2

Source : Ministry of Agriculture, Government of India.

achieved during 2008-09, a target of 239.1 million tonnes was set for 2009-10. According to the revised First Advance Estimates for 2009-10 released by the Ministry of Agriculture, however, total *kharif* foodgrains and oilseeds production is estimated to decline by 15.9 per cent over the previous year, reflecting the impact of deficient monsoon (Table 1.3). Crop wise, a decline is expected for all crops, except *urad*, *tur* and cotton. However, the overall *rabi* production prospects are promising this year in view of the delayed withdrawal of South-West monsoon, good progress of North-East monsoon and improved sowing, particularly for foodgrains, supported by planned Government efforts towards enhancing *rabi* production. It could be expected that *rabi* production may partially compensate for lower *kharif* production this year, as in 2008-09. The Government has also indicated that *rabi* season might see an additional 10 million tonnes of production

Table 1.3: Agricultural Production

(Million tonnes)				
Crop	2007-08	2008-09 @	2009-10	
			Target	Achievement*
1	2	3	4	5
Rice	96.7	99.2	100.5	
<i>Kharif</i>	82.7	84.6	86.0	71.7
<i>Rabi</i>	14	14.6	14.5	
Wheat	78.6	80.6	79.0	
Coarse Cereals	40.8	39.5	43.1	
<i>Kharif</i>	31.9	28.3	32.7	22.8
<i>Rabi</i>	8.9	11.1	10.5	
Pulses	14.8	14.7	16.5	
<i>Kharif</i>	6.4	4.8	6.5	4.4
<i>Rabi</i>	8.4	9.9	10.0	
Total Foodgrains	230.8	233.9	239.1	
<i>Kharif</i>	121	117.7	125.2	98.8
<i>Rabi</i>	109.8	116.2	114.0	
Total Oilseeds	29.8	28.2	31.6	
<i>Kharif</i>	20.7	17.9	19.4	15.2
<i>Rabi</i>	9	10.3	12.2	
Sugarcane	348.2	273.9	340.0	249.5
Cotton #	25.9	23.2	26.0	23.7
Jute and Mesta ##	11.2	10.4	11.2	10.2

@ : Fourth Advance Estimates for 2008-09.

* : First advance estimate for 2009-10.

: Million bales of 170 kgs. each.

: Million bales of 180 kgs. each.

Source : Ministry of Agriculture, Government of India.

comprising 8.5 million tonnes of foodgrains and 1.5 million tonnes of oilseeds. The Government's recent hike (in the month of October) in the minimum support price (MSP) for the *rabi* crops is likely to incentivise *rabi* crop production. The estimated decline in *kharif* output in 2009-10 and MSP increases in recent years have, however, contributed to firming up the pressure on food inflation. In terms of agricultural growth, the sector could also be expected to derive support from the 'allied sector' comprising horticulture, livestock and fisheries, which has been growing at above 5 per cent in recent years.

Food Management

I.6 The procurement of foodgrains (rice and wheat) during 2009-10 (up to January 18, 2010) was higher than that during the corresponding period of the previous year (Table 1.4). The total stock of foodgrains with the Food Corporation of India (FCI) and other Government agencies reached a peak of 54.8 million tonnes as on June 1, 2009. Since then, the stocks have declined on account of off-take exceeding the procurement. As on January 1, 2010, stocks were placed at 47.7 million tonnes, with both rice and wheat stocks significantly

Table 1.4: Management of Food Stocks

(Million tonnes)												
Month/Year	Opening Stock of Foodgrain			Procurement of Foodgrain			Foodgrain Off-take					Norms
	Rice	Wheat	Total	Rice	Wheat	Total	PDS	OWS	OMS - Domestic	Exports	Total	
1	2	3	4	5	6	7	8	9	10	11	12	13
2008-09	13.8	5.8	19.8	32.8	22.7	55.5	34.9	3.4	1.2	0.0	39.5	
2008-09@	13.8	5.8	19.8	21.0	22.7	43.7	19.4	1.7	0.0	0.0	21.1	
2009-10@	21.6	13.4	35.6	25.3	25.4	50.7	25.4	2.0	0.0	0.0	27.4	
2008												
April	13.8	5.8	19.8	1.1	14.2	15.3	2.7	0.0	0.0	0.0	2.8	16.2
July	11.3	24.9	36.3	0.1	0.2	0.3	3.0	0.3	0.0	0.0	3.1	26.9
October	7.9	22.0	30.0	8.1	0.0	8.1	2.8	0.1	0.0	0.0	2.8	16.2
December	15.6	19.6	35.5	4.2	0.0	4.2	3.0	0.5	0.2	0.0	3.6	
2009												
January	17.6	18.2	36.2	4.8	0.0	4.8	3.0	0.2	0.3	0.0	3.4	20.0
April	21.6	13.4	35.6	1.4	19.4	20.8	3.3	0.2	0.0	0.0	3.5	16.2
June	20.4	33.1	54.8	1.3	1.1	2.4	3.3	0.4	0.0	0.0	3.7	
July	19.6	32.9	53.2	1.4	0.4	1.8	3.8	0.1	0.0	0.0	3.9	26.9
October	15.4	28.5	44.2	8.4	0.0	8.4	3.7	0.3	0.0	0.0	3.9	16.2
November	21.6	26.9	48.8	3.6	0.0	3.6	
December	22.9	25.2	48.4	3.4	0.0	3.4	
2010												
January *	24.4	23.1	47.7	2.8	0.0	2.8	20.0

PDS: Public Distribution System. OWS: Other Welfare Schemes. OMS : Open Market Sales.
 .. : Not Available. @ : Procurement up to January 18, off-take up to October 30. * : Procurement up to January 18.
 Source : Ministry of Consumer Affairs, Food and Public Distribution, Government of India.

higher than their norms. While off-take during April-September 2009 was mainly through targeted public distribution system (TPDS) and other welfare schemes, for the period October to December 2009, the Government had allocated about 1.5 million tonnes of wheat and 0.5 million tonnes of rice for open market sale, keeping in view the sustained pressure on inflation in food articles. Similar quantities have also been approved for release to the open market in the January-March 2010 quarter. The Government has also recently announced additional *ad hoc* allocations of 1.1 million tonnes of rice and 2.5 million tonnes of wheat under TPDS for the period January-February 2010.

Industrial Performance

1.7 Industrial growth, which had slowed down significantly during the second half of 2008-09, exhibited strong recovery during 2009-10, especially since June 2009. The index of industrial production (IIP) posted double digit growth during August, October and November 2009, suggesting acceleration

in the recovery process. During 2009-10 (April-November 2009), industrial growth was at 7.6 per cent, significantly higher than 4.1 per cent during the corresponding period of last year (Chart I.3 and Table 1.5). The recovery was led by manufacturing sector, with a relative contribution of around 86 per cent to the overall industrial growth, commensurately supported by the mining and electricity segments. Although 12 out of 17 manufacturing industries under the two-digit classification (accounting for 57.2 per cent of the weight in the IIP) contributed to the growth in IIP, the acceleration in growth has been skewed (Table 1.6). The top five of the 17 manufacturing industries, with a combined weight of 24.1 per cent in IIP, grew by 12.7 per cent and contributed 60.3 per cent of the IIP growth during April-November 2009 (Chart I.4). This suggests that there is scope for further acceleration as the recovery becomes more broad based.

1.8 In terms of use-based classification, there was sharp acceleration in the growth of basic goods, intermediate goods and

Chart I.3: Growth in Index of Industrial Production (Y-o-Y)

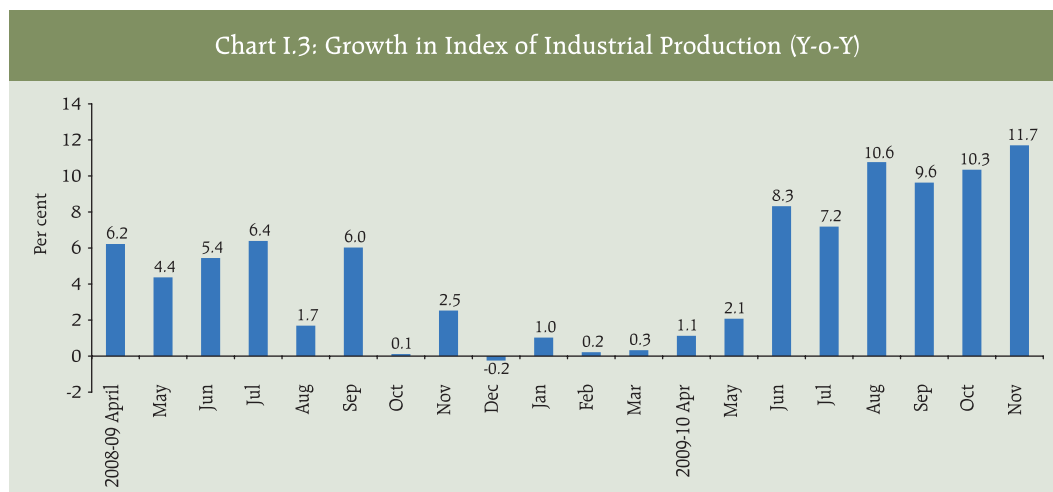


Table 1.5: Index of Industrial Production: Sectoral and Use-Based Classification of Industries

(Per cent)							
Industry Group	Weight in the IIP	Growth Rate			Weighted Contribution #		
		April-March 2008-09	April-Nov		April-March 2008-09	April-Nov	
			2008-09	2009-10 P		2008-09	2009-10 P
1	2	3	4	5	6	7	8
Sectoral							
Mining	10.5	2.6	3.4	8.3	6.3	5.4	7.1
Manufacturing	79.4	2.7	4.2	7.7	85.3	88.5	86.2
Electricity	10.2	2.8	2.8	6.1	8.3	5.9	6.7
Use-Based							
Basic Goods	35.6	2.6	3.6	6.1	28.4	26.5	23.8
Capital Goods	9.3	7.3	8.4	7.0	34.1	25.8	12.0
Intermediate Goods	26.5	-1.9	-0.7	11.4	-18.4	-4.8	38.5
Consumer Goods (a+b)	28.7	4.7	6.8	6.3	54.2	50.8	25.9
a) Consumer Durables	5.4	4.5	5.1	21.7	12.4	9.7	22.4
b) Consumer Non-durables	23.3	4.8	7.3	1.1	41.7	41.0	3.5
General	100.0	2.7	4.1	7.6	100.0	100.0	100.0

P : Provisional.
 # : Figures may not add up to 100 due to rounding off.
 Source : Central Statistical Organisation.

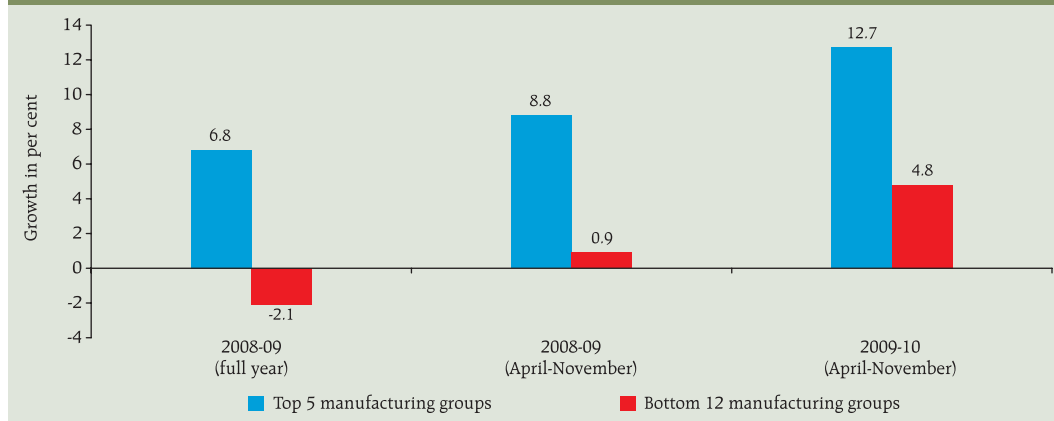
consumer durables during April-November 2009. The recovery began with a steady acceleration in growth of the intermediate

goods sector during the current financial year. This was followed by the recovery in capital goods sector, to a growth of 11.4 per

Table 1.6: Performance of Manufacturing Industry Groups (April-November 2009)

	Negative	Deceleration	Acceleration
	1	2	3
	1. Beverages, tobacco and related products 2. Food Products 3. Jute and other vegetable fibre textiles (except cotton)	1. Basic Metal and Alloy Industries 2. Paper and paper products and printing, publishing and allied industries	1. Transport equipment and parts 2. Rubber, plastic, petroleum and coal products 3. Wool, silk and man-made fibre textiles 4. Machinery and equipment other than Transport Equipment 5. Other manufacturing industries 6. Textile products 7. Chemicals and chemical products 8. Wood and Wood Products, Furniture and fixtures 9. Non-metallic mineral products 10. Cotton textiles 11. Leather and leather and fur products 12. Metal products and parts (except machinery and equipment)
Combined Weight in IIP	12.1	10.1	57.2

Chart I.4: Growth Performance of the Manufacturing Sector in the IIP



cent during August-November 2009, from the decline in output during March-May 2009, indicating an improvement in investment sentiments. Consumer non-durables output witnessed growth since July 2009, despite being weighed down by the decline in food products, beverages and tobacco products and jute and other vegetable fibre textiles (except cotton). The overall growth in the consumer goods during April-November 2009-10 has been driven by a sharp double digit growth in the durable segment, with significant

contribution coming from automobiles production.

Infrastructure

1.9 The core infrastructure growth was higher at 4.8 per cent during April-December 2009 as compared with 3.2 per cent during the corresponding period of the previous year. This was led by improved growth in the output of cement, coal, electricity generation and finished steel. Finished steel production gained strength during October-

Chart I.5: Industrial Growth – Sectoral Trends

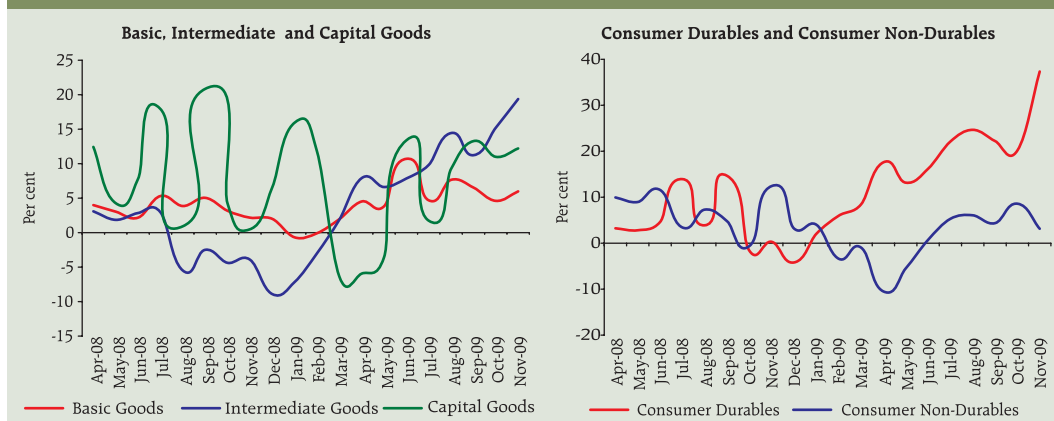
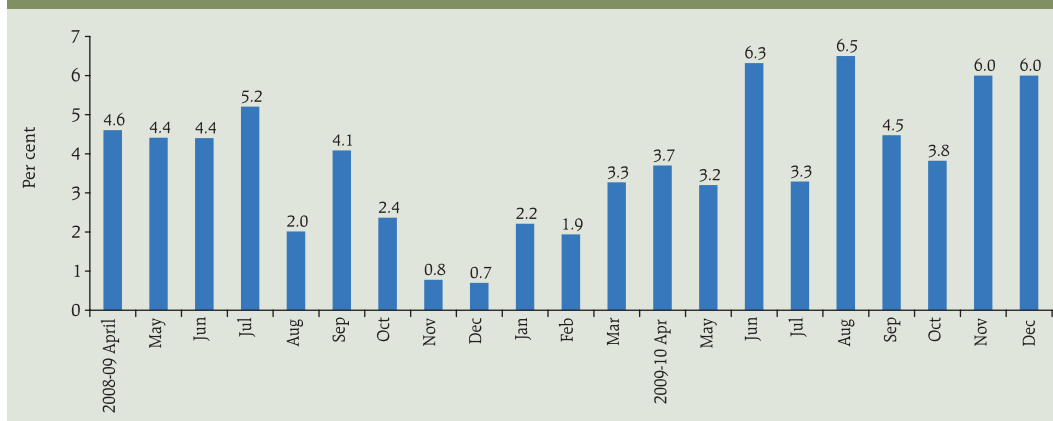


Chart I.6: Growth in Infrastructure Industries (Y-o-Y)



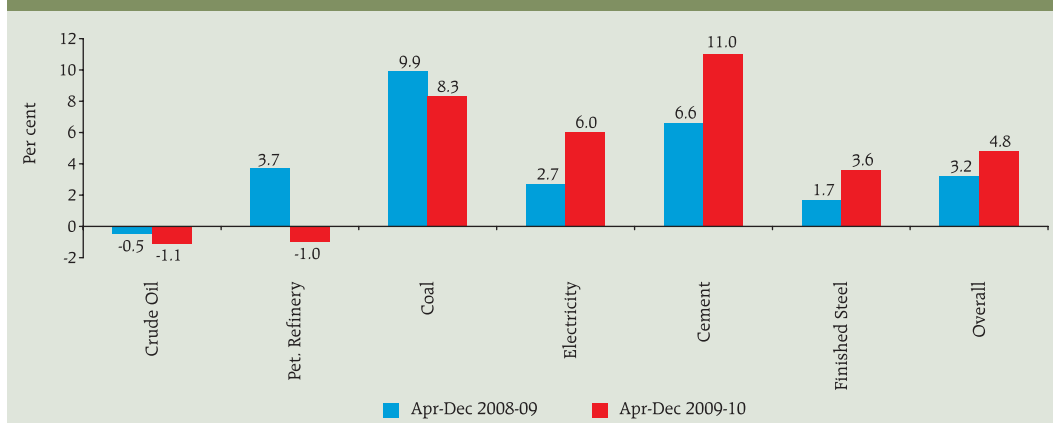
December 2009, partly reflecting improved automobiles production and pick up in construction activities in recent months as well as the base effect of decline in steel production a year ago. The output of crude oil and petroleum refinery products declined during April-December 2009 over the corresponding period of the previous year. While the petroleum products segment, which witnessed some recovery since August 2009, decelerated in December 2009, the crude oil sector posted a modest

recovery, reversing the declining trend in recent months (Charts I.6 and I.7).

Services Sector

I.10 The growth in services sector activities moderated to 8.3 per cent in the first half of 2009-10, from 9.9 per cent in the first half of 2008-09 and 8.9 per cent during the second half of 2008-09. The deceleration in the growth of 'construction' and 'trade, hotels, transports & communications' have

Chart I.7: Sector-wise growth in Infrastructure Industries



mainly contributed to the overall moderation of the services sector growth.

I.11 Within the first half of 2009-10, the second quarter growth at 9.0 per cent shows significant acceleration over the 7.7 per cent growth in the first quarter besides showing a reversal in the trend of continuous deceleration over past few quarters. The upturn in Q2 of 2009-10 was largely contributed by 'community, personal & social services' sub-group, reflecting payouts of arrears by the Government under the Sixth Pay Commission award. Excluding the arrears, the growth in services sector would be about 7.0 per cent during the second quarter of 2009-10 (Chart I.8). The overall GDP growth of 7.9 per cent would also work out to be lower at 6.5 per cent, adjusted for the impact of arrears.

I.12 The lead indicators of service sector activity show that, services such as tourist arrivals, cargo handled by seaports and airports, and passengers handled by international terminals which are dependent on external demand, either registered a decline or exhibited subdued

growth during 2009-10 so far, reflecting the global economic conditions. However, there has been a significant improvement in these services during the third quarter of 2009. Services dependent on domestic demand have exhibited a robust and steady growth during 2009-10, so far (Table 1.7).

I.13 In sum, the aggregate supply conditions as reflected in the GDP growth during the first two quarters of 2009-10 show acceleration in recovery, led by the industrial performance and fiscal expenditure driven services. The agricultural sector witnessed lower than expected order of deceleration in growth during the second quarter of 2009-10, as only part of the impact of the deficient South-West monsoon on *kharif* production has been captured in the Q2 GDP estimates, and the remaining part would be reflected in the GDP for Q3 of 2009-10. Favourable prospects for *rabi* output may partially offset the dampening impact of lower *kharif* output. The recovery in industrial growth has been uniform with accelerated growth seen in recent months in all the three

Chart I.8: Trends in Quarterly Growth of Services Sector

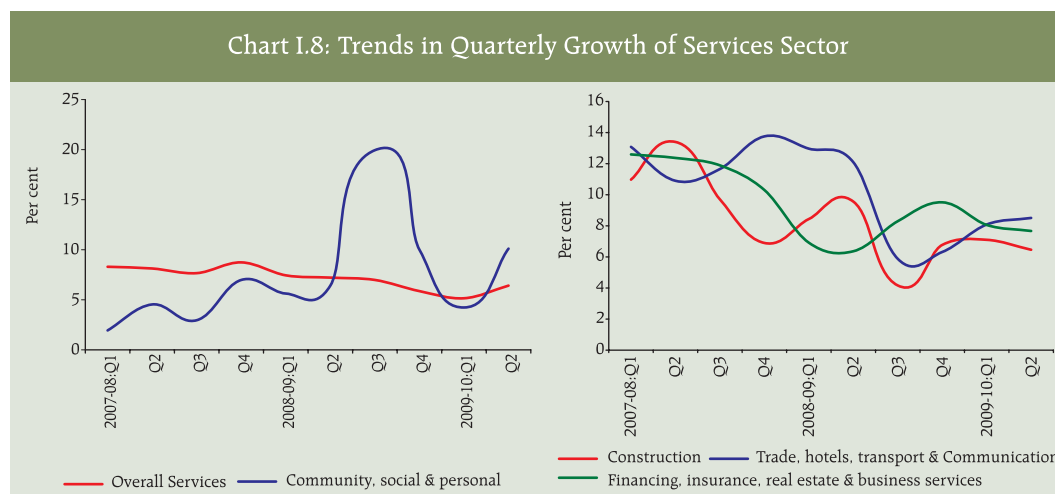


Table 1.7: Indicators of Services Sector Activity

(Per cent)							
	2007-08	2008-09	April-December		2009-10		
			2008	2009	Q1	Q2	Q3
1	2	3	4	5	6	7	8
Tourist arrivals	12.2	-2.5	4.0	-3.3	-1.7	-4.0	6.5
Commercial vehicles production	4.8	-24.0	-16.0	15.1	-18.5	5.2	127.3
Railway revenue earning freight traffic	9.0	4.9	6.0	7.5	5.1	8.0	9.5
Cell phone connections*	38.3	44.8	63.5	56.5	59.4	52.4	60.1
Cargo handled at major ports*	12	2.1	5.2	3.8	2.1	3.0	11.2
Civil aviation*							
a) Export cargo handled	7.5	3.4	7.0	3.5	0.5	1.9	17.6
b) Import cargo handled	19.7	-5.7	4.2	-7.1	-12.7	-4.9	3.1
c) Passengers handled at international terminals	11.9	3.8	7.5	3.2	0.1	3.7	11.3
d) Passengers handled at domestic terminals	20.6	-12.1	-8.5	10.8	-6.5	22.2	28.7
Cement	8.1	7.2	6.6	11.0	12.1	12.6	8.5
Steel	6.2	1.6	1.7	3.6	1.7	1.7	7.8

*: Up to October 2009.
Source : Ministry of Tourism; Ministry of Commerce and Industry; Ministry of Statistics and Programme Implementation; Reserve Bank of India.

sectors, *viz.*, mining, electricity and manufacturing. Core infrastructure sector also registered higher growth in April-December 2009 than during the corresponding

period of the previous year. Major lead indicators of service sector activities indicate acceleration in the growth momentum, particularly since Q2 of 2009-10.