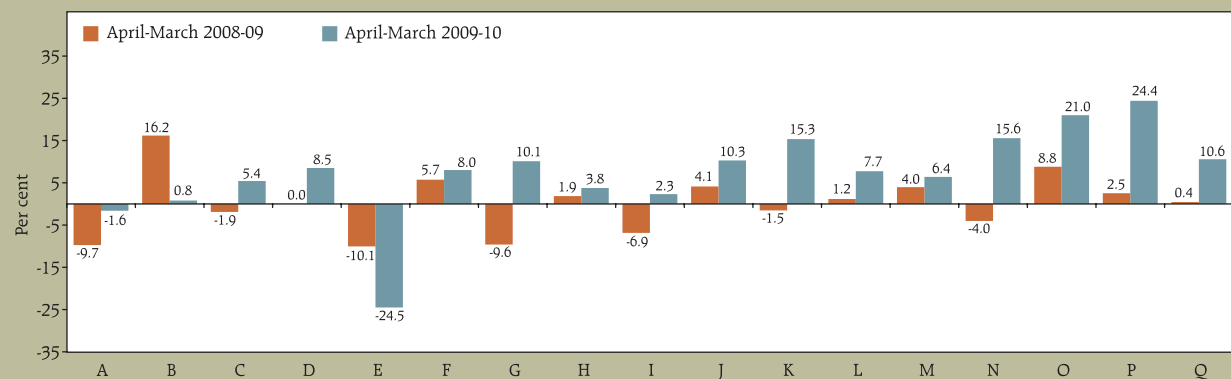


No. 29: IIP – Seventeen Major Industry Groups of Manufacturing Sector
(Base : 1993-94 = 100)

Industry Group	Industry	Weight	Annual			Cumulative		Monthly	
			2007-08	2008-09	2009-10 P	April-March		March	
						2008-09	2009-10 P	2009	2010 P
1	2	3	4	5	6	7	8	9	10
	Manufacturing Index	79.36	287.2	295.1	327.3	295.1	327.3	326.9	373.6
20-21	Food Products	9.08	198.2	178.9	176.0	178.9	176.0	176.8	223.1
22	Beverages, Tobacco and Related Products	2.38	498.0	578.5	583.2	578.5	583.2	599.2	623.0
23	Cotton Textiles	5.52	164.0	160.9	169.6	160.9	169.6	163.3	175.3
24	Wool, Silk and Man-made Fibre Textiles	2.26	281.2	281.2	305.0	281.2	305.0	309.7	297.7
25	Jute and Other Vegetable Fibre Textiles (Except Cotton)	0.59	120.7	108.6	82.0	108.6	82.0	120.9	109.3
26	Textile Products (Including Wearing Apparel)	2.54	295.5	312.5	337.5	312.5	337.5	356.0	336.9
27	Wood and Wood Products, Furniture and Fixtures	2.70	127.9	115.6	127.3	115.6	127.3	120.3	146.3
28	Paper and Paper Products and Printing, Publishing and Allied Industries	2.65	255.3	260.0	269.8	260.0	269.8	277.5	294.3
29	Leather and Leather & Fur Products	1.14	167.8	156.3	159.9	156.3	159.9	133.7	149.4
30	Chemicals and Chemical Products (Except Products Of Petroleum and Coal)	14.00	313.4	326.3	359.9	326.3	359.9	351.6	368.5
31	Rubber, Plastic, Petroleum and Coal Products	5.73	246.4	242.6	279.8	242.6	279.8	279.1	319.9
32	Non-metallic Mineral Products	4.40	323.2	327.0	352.3	327.0	352.3	374.1	395.8
33	Basic Metal and Alloy Industries	7.45	312.7	325.1	345.9	325.1	345.9	337.7	391.0
34	Metal Products and Parts, Except Machinery and Equipment	2.81	172.9	165.9	191.7	165.9	191.7	173.8	248.2
35-36	Machinery and Equipment Other Than Transport Equipment	9.57	394.4	429.1	519.3	429.1	519.3	532.6	650.3
37	Transport Equipment and Parts	3.98	378.4	387.9	482.6	387.9	482.6	482.2	593.1
38	Other Manufacturing Industries	2.56	357.4	358.9	396.9	358.9	396.9	364.3	510.5

Source : Central Statistical Organisation, Government of India.

Growth Performance of Manufacturing Industries



- | | | |
|---|--|---|
| A Food products | G Wood and wood products-furniture & fixtures | L Non-metallic mineral products |
| B Beverages-tobacco and related products | H Paper and paper products and printing-publishing and allied industries | M Basic metal and alloy industries |
| C Cotton textiles | I Leather and leather & fur products | N Metal products and parts-except machinery and equipment |
| D Wool,silk and man-made fibre textiles | J Chemicals and chemical products (except products of petroleum & coal) | O Machinery and equipment other than transport equipment |
| E Jute and other vegetable fibre textiles (except cotton) | K Rubber-plastic-petroleum and coal products | P Transport equipment and parts |
| F Textile products (including wearing apparel) | | Q Other manufacturing industries |