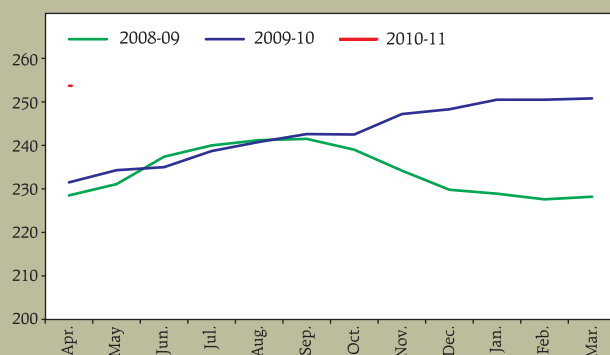
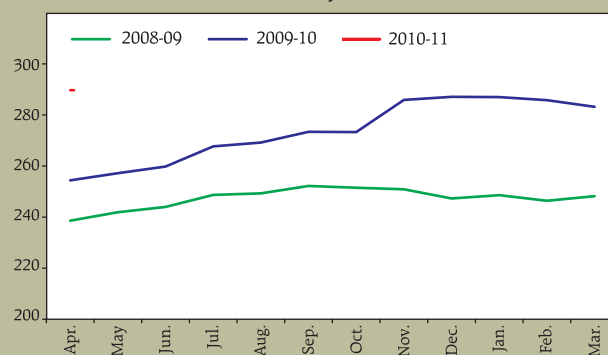


## No. 38: Index Numbers of Wholesale Prices in India – by Groups and Sub-Groups

(Base : 1993-94 = 100)

Commodities / Major Groups / Groups / Sub-Groups	Weight	1994-95	2007-08	2008-09	2009			2010			
		April-March			Apr.	Nov.	Dec.	Jan.	Feb.	Mar. (P)	Apr. (P)
1	2	3	4	5	6	7	8	9	10	11	12
<b>ALL COMMODITIES</b>	<b>100.000</b>	<b>112.6</b>	<b>215.9</b>	<b>233.9</b>	<b>231.5</b>	<b>247.2</b>	<b>248.3</b>	<b>250.5</b>	<b>250.5</b>	<b>250.8</b>	<b>253.7</b>
<b>I. PRIMARY ARTICLES</b>	<b>22.025</b>	<b>115.8</b>	<b>224.8</b>	<b>247.3</b>	<b>254.4</b>	<b>285.9</b>	<b>287.1</b>	<b>287.0</b>	<b>285.8</b>	<b>283.2</b>	<b>289.7</b>
<b>(A) Food Articles</b>	<b>15.402</b>	<b>112.8</b>	<b>222.1</b>	<b>239.8</b>	<b>250.2</b>	<b>291.9</b>	<b>290.5</b>	<b>288.8</b>	<b>286.9</b>	<b>284.4</b>	<b>292.4</b>
a. Foodgrains (Cereals+Pulses)	5.009	114.7	215.6	234.1	250.6	282.6	287.9	289.0	285.7	281.5	280.5
a1. Cereals	4.406	113.6	211.8	230.5	246.5	269.5	274.3	275.8	275.0	271.2	268.9
a2. Pulses	0.603	122.2	243.2	259.8	280.1	377.8	387.4	385.3	364.0	356.5	365.3
b. Fruits & Vegetables	2.917	108.0	236.5	255.5	271.1	318.5	300.8	283.5	276.9	259.8	287.8
b1. Vegetables	1.459	110.4	224.4	232.9	262.6	322.1	286.6	247.5	212.6	195.3	257.6
b2. Fruits	1.458	105.7	248.6	278.2	279.8	314.8	315.0	319.4	341.3	324.4	318.1
c. Milk	4.367	110.3	212.6	228.5	234.2	262.4	263.1	266.4	268.9	277.4	285.6
d. Eggs, Meat & Fish	2.208	116.1	238.7	249.8	250.0	322.8	322.9	326.6	327.5	327.1	330.6
e. Condiments & Spices	0.662	126.2	239.3	267.7	274.3	353.4	355.9	354.2	348.2	346.5	352.5
f. Other Food Articles	0.239	111.6	155.4	204.7	214.2	244.1	242.9	229.5	218.9	207.3	205.4
<b>(B) Non-Food Articles</b>	<b>6.138</b>	<b>124.2</b>	<b>212.2</b>	<b>235.8</b>	<b>231.7</b>	<b>247.1</b>	<b>254.4</b>	<b>257.0</b>	<b>255.6</b>	<b>254.4</b>	<b>256.1</b>
a. Fibres	1.523	150.0	179.1	217.2	203.3	220.9	234.9	236.0	233.1	235.6	235.8
b. Oil seeds	2.666	118.5	218.3	245.9	243.9	256.5	261.9	267.4	265.3	260.2	261.1
c. Other Non-Food Articles	1.949	112.0	229.7	236.5	237.4	254.5	259.4	259.1	259.9	261.3	265.2
<b>(C) Minerals</b>	<b>0.485</b>	<b>104.9</b>	<b>469.5</b>	<b>631.6</b>	<b>675.4</b>	<b>591.6</b>	<b>591.6</b>	<b>610.5</b>	<b>629.2</b>	<b>610.5</b>	<b>629.2</b>
a. Metallic Minerals	0.297	103.8	687.7	943.1	1024.2	878.7	878.7	912.5	944.3	912.6	944.3
b. Other Minerals	0.188	106.7	124.8	139.6	124.5	138.2	138.2	133.5	131.5	133.4	131.5
<b>II. Fuel, Power, Light &amp; Lubricants</b>	<b>14.226</b>	<b>108.9</b>	<b>327.2</b>	<b>351.4</b>	<b>323.4</b>	<b>345.4</b>	<b>350.6</b>	<b>355.5</b>	<b>357.0</b>	<b>361.8</b>	<b>364.0</b>
a. Coal Mining	1.753	105.1	238.0	253.5	251.8	251.8	285.7	285.7	285.7	285.7	285.7
b. Minerals Oils	6.990	106.1	392.0	435.2	383.9	418.9	420.7	430.7	433.8	443.4	448.1
c. Electricity	5.484	113.6	273.1	275.9	269.2	281.9	281.9	281.9	281.9	281.9	281.9

See 'Notes on Tables'.

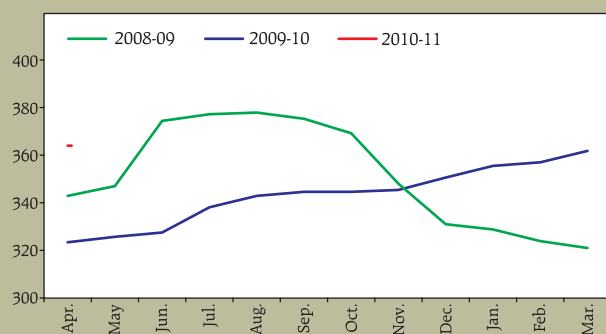
Monthly Movement of the Index of  
WPI-All CommoditiesMonthly Movement in the Index of  
WPI-Primary Articles

No. 38: Index Numbers of Wholesale Prices in India – by Groups and Sub-Groups (Contd.)

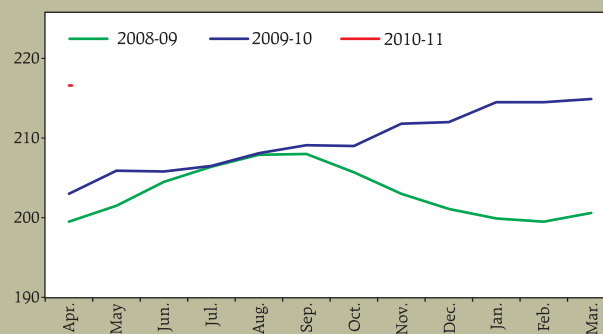
(Base : 1993-94 = 100)

Commodities / Major Groups / Groups / Sub-Groups	Weight	1994-95	2007-08	2008-09	2009			2010			
		April-March			Apr.	Nov.	Dec.	Jan.	Feb.	Mar. (P)	Apr. (P)
1	2	3	4	5	6	7	8	9	10	11	12
<b>III. MANUFACTURED PRODUCTS</b>	<b>63.749</b>	<b>112.3</b>	<b>188.0</b>	<b>203.1</b>	<b>203.0</b>	<b>211.8</b>	<b>212.0</b>	<b>214.5</b>	<b>214.5</b>	<b>214.9</b>	<b>216.6</b>
<b>(A) Food Products</b>	<b>11.538</b>	<b>114.1</b>	<b>190.4</b>	<b>209.4</b>	<b>228.1</b>	<b>253.5</b>	<b>253.9</b>	<b>260.8</b>	<b>258.8</b>	<b>257.0</b>	<b>249.1</b>
a. Dairy Products	0.687	117.0	232.6	248.4	252.3	278.5	277.6	280.6	282.3	283.8	284.6
b. Canning, Preserving & Processing of Fish	0.047	100.0	293.8	327.8	419.4	419.4	419.4	419.4	419.4	419.4	419.4
c. Grain Mill Products	1.033	103.7	230.4	240.5	240.8	258.1	258.3	258.1	257.5	269.4	259.9
d. Bakery Products	0.441	107.7	195.5	201.3	201.7	203.0	203.0	203.0	203.0	210.1	210.1
e. Sugar, Khandsari & Gur	3.929	119.1	155.2	168.7	201.2	256.8	258.7	284.1	285.3	277.2	261.9
f. Manufacture of common Salts	0.021	104.8	222.4	253.2	267.4	271.6	282.5	282.5	277.3	282.5	304.8
g. Cocoa, Chocolate, Sugar & Confectionery	0.087	118.3	188.1	188.1	188.1	188.1	188.1	188.1	188.1	188.1	188.1
h. Edible Oils	2.775	110.9	175.4	188.1	177.9	176.7	179.8	179.6	173.9	175.8	172.3
i. Oil Cakes	1.416	121.6	256.6	323.4	384.6	411.2	402.9	387.6	378.5	370.8	361.6
j. Tea & Coffee Processing	0.967	104.4	193.8	201.0	221.9	227.0	227.0	227.3	228.0	227.8	228.0
k. Other Food Products n.e.c.	0.154	111.6	218.9	240.5	250.9	249.6	249.6	251.8	253.2	250.7	252.1
<b>(B) Beverages, Tobacco &amp; Tobacco Products</b>	<b>1.339</b>	<b>118.3</b>	<b>268.5</b>	<b>294.0</b>	<b>302.4</b>	<b>310.7</b>	<b>311.9</b>	<b>312.1</b>	<b>312.1</b>	<b>319.9</b>	<b>320.1</b>
a. Wine Industries	0.269	150.2	309.3	309.9	313.9	311.7	311.8	312.3	312.1	312.8	311.5
b. Malt liquor	0.043	109.1	198.0	235.8	270.5	305.2	305.2	305.2	305.2	305.2	305.2
c. Soft drinks & Carbonated Water	0.053	109.1	187.6	189.1	202.3	203.0	203.0	205.1	207.0	210.1	219.2
d. Manufacture of Bidi, Cigarettes, Tobacco & Zarda	0.975	110.4	264.8	297.8	306.1	316.5	318.1	318.1	318.1	328.5	328.5

Monthly Movement of the Index of  
WPI-Fuel, Power, Light and Lubricants



Monthly Movement in the Index of  
WPI-Manufactured Products



## No. 38: Index Numbers of Wholesale Prices in India – by Groups and Sub-Groups (Contd.)

(Base : 1993-94 = 100)

Commodities / Major Groups / Groups / Sub-Groups	Weight	1994-95	2007-08	2008-09	2009			2010			
		April-March			Apr.	Nov.	Dec.	Jan.	Feb.	Mar. (P)	Apr. (P)
1	2	3	4	5	6	7	8	9	10	11	12
<b>(C) Textiles</b>	<b>9.800</b>	<b>118.2</b>	<b>130.9</b>	<b>138.8</b>	<b>140.7</b>	<b>147.9</b>	<b>151.1</b>	<b>154.6</b>	<b>155.2</b>	<b>155.8</b>	<b>158.2</b>
a. Cotton Textiles	4.215	132.7	156.3	168.6	173.1	183.2	188.0	195.2	196.1	195.6	200.2
a1. Cotton Yarn	3.312	136.2	153.0	167.1	171.5	184.3	190.5	199.4	200.5	199.9	205.8
a2. Cotton Cloth (Mills)	0.903	119.9	168.4	174.2	178.8	178.8	179.0	179.6	179.6	179.6	179.6
b. Man Made Textiles	4.719	105.9	97.4	100.3	97.5	97.7	98.2	99.0	99.5	99.3	100.5
b1. Man Made Fibre	4.406	105.6	94.8	97.7	94.5	94.7	95.3	96.2	96.7	96.4	97.7
b2. Man Made Cloth	0.313	109.9	134.4	137.0	139.4	139.4	139.4	139.4	139.4	139.4	139.4
c. Woolen Textiles	0.190	132.6	170.6	176.7	172.0	174.8	174.4	177.1	177.1	177.1	179.3
d. Jute, Hemp & Mesta Textiles	0.376	110.3	205.6	227.6	259.1	319.3	339.9	339.1	340.1	362.6	358.6
e. Other Misc. Textiles	0.300	109.0	182.7	192.1	196.1	211.3	211.3	211.3	211.3	211.3	211.3
<b>(D) Wood &amp; Wood Products</b>	<b>0.173</b>	<b>110.9</b>	<b>215.9</b>	<b>233.9</b>	<b>237.6</b>	<b>237.6</b>	<b>237.6</b>	<b>237.6</b>	<b>237.6</b>	<b>237.6</b>	<b>237.6</b>
<b>(E) Paper &amp; Paper Products</b>	<b>2.044</b>	<b>106.1</b>	<b>194.2</b>	<b>202.7</b>	<b>204.0</b>	<b>204.0</b>	<b>204.2</b>	<b>204.2</b>	<b>204.9</b>	<b>204.5</b>	<b>205.9</b>
a. Paper & pulp	1.229	108.7	175.5	189.1	189.6	188.2	188.6	188.6	189.7	189.2	191.4
b. Manufacture of boards	0.237	110.9	164.3	165.7	166.2	166.8	166.8	166.8	166.8	166.8	166.8
c. Printing & publishing of newspapers, periodicals etc.	0.578	98.5	246.2	246.8	250.0	252.7	252.7	252.7	252.7	252.7	252.7
<b>(F) Leather &amp; Leather Products</b>	<b>1.019</b>	<b>109.7</b>	<b>166.1</b>	<b>167.9</b>	<b>166.2</b>	<b>166.2</b>	<b>166.2</b>	<b>165.8</b>	<b>164.4</b>	<b>164.4</b>	<b>164.4</b>
<b>(G) Rubber &amp; Plastic Products</b>	<b>2.388</b>	<b>106.4</b>	<b>159.0</b>	<b>166.3</b>	<b>167.9</b>	<b>168.7</b>	<b>169.0</b>	<b>171.9</b>	<b>174.4</b>	<b>175.3</b>	<b>175.9</b>
a. Tyres & Tubes	1.286	104.1	156.8	167.2	172.0	175.3	175.3	181.8	184.2	185.5	186.5
a1. Tyres	1.144	103.4	143.5	150.2	153.9	155.0	155.0	158.1	160.2	161.7	161.7
a2. Tubes	0.142	110.0	264.2	303.9	317.8	338.9	338.9	373.3	377.5	377.5	386.1
b. Plastic Products	0.937	106.8	154.2	158.7	156.0	152.8	153.3	151.8	155.1	155.4	155.8
c. Other Rubber & Plastic Products	0.165	121.0	203.0	202.8	202.8	208.2	208.2	208.2	208.2	208.2	208.2
<b>(H) Chemicals &amp; Chemical   Products</b>	<b>11.931</b>	<b>116.6</b>	<b>204.8</b>	<b>219.5</b>	<b>220.3</b>	<b>231.1</b>	<b>229.2</b>	<b>230.0</b>	<b>231.3</b>	<b>232.6</b>	<b>232.8</b>
a. Basic heavy Inorganic Chemicals	1.446	112.2	190.3	226.2	186.5	184.4	176.9	174.2	183.9	192.2	195.4
b. Basic Heavy Organic Chemicals	0.455	118.7	176.4	180.0	152.2	173.8	182.8	188.5	196.6	191.9	193.4
c. Fertilisers & Pesticides	4.164	117.7	173.7	188.3	187.8	187.8	183.9	182.9	183.1	182.9	181.8
c1. Fertilisers	3.689	115.8	180.8	196.5	196.1	192.6	188.4	187.3	187.4	187.4	186.1
c2. Pesticides	0.475	132.5	118.5	124.4	122.9	150.4	148.6	148.6	148.6	148.4	148.5
d. Paints, Varnishes & Lacquers	0.496	101.3	143.0	157.3	166.3	164.3	164.6	164.5	164.5	165.3	165.4
e. Dyestuffs & Indigo	0.175	108.4	111.2	118.6	112.4	112.4	112.4	112.4	112.7	120.3	120.3
f. Drugs & Medicines	2.532	129.4	314.9	320.8	357.0	387.9	390.1	390.1	389.9	389.9	390.5
g. Perfumes, Cosmetics, Toiletries etc.	0.978	118.0	239.7	258.2	259.0	298.7	300.1	305.6	302.6	302.3	296.1
h. Turpentine, Synthetic Resins, Plastic Materials etc.	0.746	107.6	143.4	152.2	135.6	140.0	133.5	143.6	144.1	147.8	155.7
i. Matches, Explosives & Other Chemicals n.e.c.	0.940	98.3	144.3	158.0	155.9	158.8	157.8	160.4	160.3	162.0	162.0

No. 38: Index Numbers of Wholesale Prices in India – by Groups and Sub-Groups (*Concl'd.*)

(Base : 1993-94 = 100)

Commodities / Major Groups / Groups / Sub-Groups	Weight	1994-95	2007-08	2008-09	2009			2010			
		April-March			Apr.	Nov.	Dec.	Jan.	Feb.	Mar. (P)	Apr. (P)
1	2	3	4	5	6	7	8	9	10	11	12
<b>(I) Non-Metallic Mineral Products</b>	<b>2.516</b>	<b>110.9</b>	<b>208.8</b>	<b>216.6</b>	<b>220.4</b>	<b>224.7</b>	<b>215.9</b>	<b>211.6</b>	<b>215.5</b>	<b>219.6</b>	<b>227.0</b>
a. Structural Clay Products	0.230	100.0	212.8	221.4	226.2	227.2	227.2	225.0	225.0	225.0	225.0
b. Glass, Earthenware, Chinaware & their Products	0.237	113.3	167.9	166.4	166.4	190.6	190.6	190.6	192.9	190.6	192.9
c. Cement	1.731	112.4	217.5	223.3	227.9	225.8	213.1	207.1	212.4	218.1	228.1
d. Cement, Slate & Graphite Products	0.319	108.8	189.1	214.2	215.1	242.0	242.0	242.0	242.0	245.8	247.5
<b>(J) Basic Metals Alloys &amp; Metals Products</b>	<b>8.342</b>	<b>108.4</b>	<b>249.8</b>	<b>285.3</b>	<b>255.0</b>	<b>258.3</b>	<b>259.2</b>	<b>259.5</b>	<b>259.5</b>	<b>259.1</b>	<b>276.5</b>
a. Basic Metals & Alloys	6.206	107.0	256.3	307.8	270.8	274.3	274.3	275.8	276.5	275.8	298.8
a1. Iron & Steel	3.637	106.0	280.0	336.6	285.8	291.3	290.8	293.4	294.8	293.9	327.4
a2. Foundries for Casting, Forging & Structural	0.896	106.7	245.2	301.3	296.4	286.2	286.2	286.1	286.2	284.5	282.9
a3. Pipes, Wires Drawing & Others	1.589	109.5	213.5	253.3	229.0	237.8	238.9	238.8	238.3	238.7	253.0
a4. Ferro Alloys	0.085	104.5	155.5	159.7	142.2	103.5	103.5	103.5	103.5	103.5	103.5
b. Non-Ferrous Metals	1.466	115.9	265.1	248.2	232.0	239.8	245.3	240.5	237.4	237.9	238.0
b1. Aluminium	0.853	114.7	248.7	245.3	225.8	227.5	235.2	225.8	222.5	222.5	222.5
b2. Other Non-Ferrous Metals	0.613	117.7	288.0	252.1	240.7	257.1	259.4	261.0	258.1	259.2	259.6
c. Metal Products	0.669	105.0	155.9	158.0	159.0	150.5	150.5	150.5	150.5	150.5	153.7
<b>(K) Machinery &amp; Machine Tools</b>	<b>8.363</b>	<b>106.0</b>	<b>166.6</b>	<b>174.5</b>	<b>171.8</b>	<b>173.3</b>	<b>174.9</b>	<b>178.9</b>	<b>177.2</b>	<b>178.0</b>	<b>178.5</b>
a. Non-Electrical Machinery & Parts	3.379	108.6	199.5	210.0	209.2	210.7	211.2	214.8	216.8	217.0	217.3
a1. Heavy Machinery & Parts	1.822	111.0	207.3	222.5	221.8	224.4	224.7	231.2	235.0	235.7	236.2
a2. Industrial Machinery for Textiles, etc.	0.568	108.5	260.5	258.6	258.0	257.4	259.6	260.0	260.0	260.0	260.0
a3. Refrigeration & Other Non-electrical Machinery	0.989	104.3	150.2	159.0	157.9	158.6	158.6	158.6	158.3	157.9	157.9
b. Electrical Machinery	4.985	104.2	144.3	150.4	146.4	147.9	150.3	154.6	150.4	151.6	152.3
b1. Electrical Industrial Machinery	1.811	105.2	160.9	169.6	172.1	168.5	173.9	182.5	187.8	192.3	193.4
b2. Wires & Cables	1.076	109.0	230.3	237.8	214.2	224.3	226.0	231.5	202.6	203.6	204.2
b3. Dry & Wet Batteries	0.275	105.8	163.3	175.8	175.5	186.3	186.3	186.3	186.3	187.3	188.7
b4. Electrical Apparatus & Appliances	1.823	100.1	74.2	75.9	76.6	76.6	76.6	76.6	77.0	75.2	75.2
<b>(L) Transport Equipment &amp; Parts</b>	<b>4.295</b>	<b>107.4</b>	<b>166.9</b>	<b>175.6</b>	<b>175.1</b>	<b>175.8</b>	<b>175.8</b>	<b>175.8</b>	<b>175.9</b>	<b>176.2</b>	<b>176.6</b>
a. Locomotives, Railway Wagons & Parts	0.318	105.3	131.6	142.1	144.2	143.9	143.9	143.9	143.9	143.9	143.9
b. Motor Vehicles, Motorcycles, Scooters, Bicycles & Parts	3.977	107.6	169.7	178.2	177.6	178.4	178.4	178.4	178.5	178.8	179.1

Source : Office of the Economic Adviser, Ministry of Commerce & Industry, Government of India.