

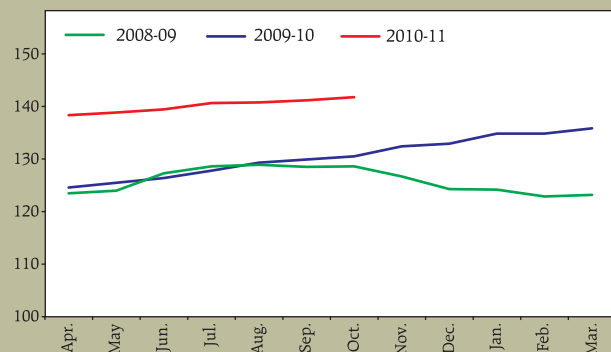
No. 38: Index Numbers of Wholesale Prices in India – by Groups and Sub-Groups

(Base : 2004-05= 100)

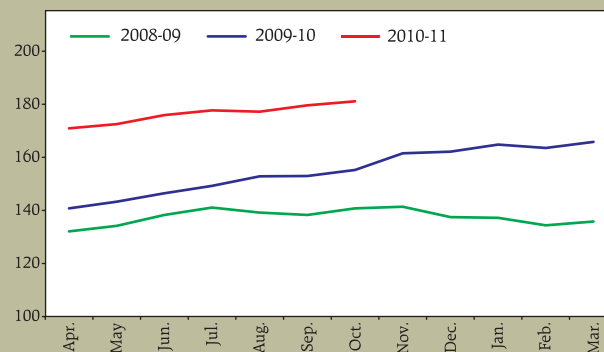
Commodities / Major Groups / Groups / Sub-Groups	Weight	2005-06	2008-09	2009-10	2009	2010					
		April-March			Oct.	May	Jun.	Jul.	Aug.	Sep. (P)	Oct. (P)
1	2	3	4	5	6	7	8	9	10	11	12
ALL COMMODITIES	100.000	104.4	125.9	130.4	130.5	138.8	139.4	140.6	140.7	141.1	141.7
I. PRIMARY ARTICLES	20.118	104.3	137.5	154.9	155.3	172.6	176.0	177.8	177.3	179.7	181.2
(A) Food Articles	14.337	105.4	134.8	155.4	157.8	172.1	175.4	178.2	176.7	179.0	180.1
a. Foodgrains (Cereals+Pulses)	4.090	107.3	145.3	166.4	166.9	172.2	173.4	174.2	174.4	173.9	173.8
a1. Cereals	3.373	106.0	143.1	161.2	161.2	165.0	166.3	167.4	168.7	168.6	168.6
a2. Pulses	0.717	113.3	155.8	190.8	193.7	206.2	206.8	205.8	201.7	198.8	198.2
b. Fruits & Vegetables	3.843	108.0	134.9	147.8	155.8	157.6	168.3	171.3	161.8	164.5	170.6
b1. Vegetables	1.736	113.7	141.9	161.8	179.3	150.9	175.1	172.0	176.2	181.0	185.9
b2. Fruits	2.107	103.3	129.1	136.2	136.4	163.0	162.7	170.7	149.9	150.9	158.0
c. Milk	3.238	101.0	123.2	146.4	146.4	171.9	171.9	174.6	176.5	176.9	178.1
d. Eggs, Meat & Fish	2.414	106.3	125.4	151.5	150.9	185.1	184.3	188.2	190.1	198.2	193.4
e. Condiments & Spices	0.569	94.5	151.2	182.7	188.6	214.0	220.5	231.7	237.1	244.0	243.7
f. Other Food Articles	0.183	107.8	175.0	196.2	192.3	176.8	173.7	176.8	178.8	179.4	181.9
(B) Non-Food Articles	4.258	96.7	129.2	136.2	132.1	150.8	152.9	152.2	153.8	157.2	161.4
a. Fibres	0.877	96.4	137.9	140.0	136.0	154.3	157.6	157.1	157.4	172.1	186.8
b. Oil seeds	1.781	90.4	131.2	135.0	130.3	137.7	137.7	137.1	138.4	140.4	140.0
c. Other Non-Food Articles	1.386	103.9	117.5	128.7	124.1	164.6	167.6	170.5	170.6	167.3	171.1
d. Flowers	0.213	103.8	152.3	179.2	181.9	156.7	165.1	138.8	158.3	170.1	174.0
(C) Minerals	1.524	115.2	186.5	202.9	197.1	238.4	246.0	246.1	248.4	248.6	247.1
a. Metallic Minerals	0.489	127.9	266.2	258.3	232.3	350.8	371.7	372.1	371.3	372.3	368.0
b. Other Minerals	0.135	104.8	144.2	146.0	146.7	145.9	144.0	144.0	145.2	144.0	146.8
c. Crude Petroleum	0.900	109.8	149.7	181.4	185.5	191.2	192.9	193.1	197.1	197.1	196.5
II. FUEL & POWER	14.910	113.6	135.0	132.1	133.4	142.8	143.2	147.8	148.0	147.6	148.1
a. Coal	2.094	117.6	151.3	156.5	157.0	163.0	163.0	163.0	163.0	163.0	163.0
b. Mineral Oils	9.364	116.7	141.8	135.8	137.3	148.9	149.5	156.9	157.2	156.6	157.3
c. Electricity	3.452	102.6	106.4	107.4	108.6	114.0	114.0	114.0	114.0	114.0	114.0

See 'Notes on Tables'.

Monthly Movement of the Index of
WPI-All Commodities



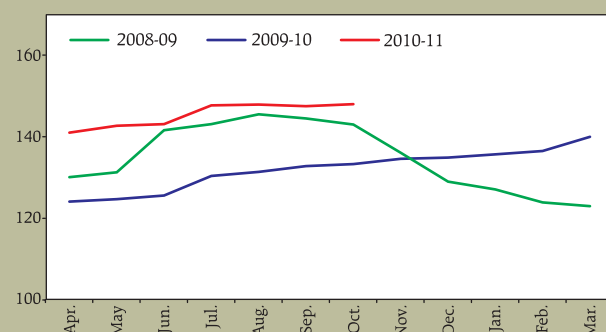
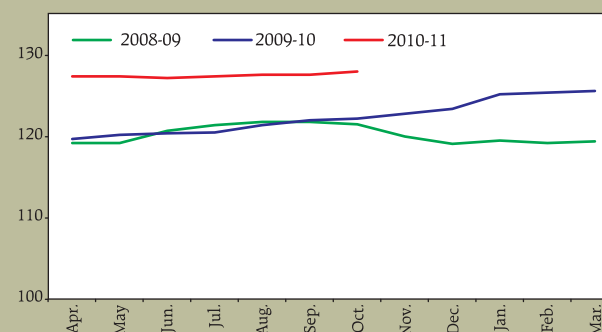
Monthly Movement in the Index of
WPI-Primary Articles



No. 38: Index Numbers of Wholesale Prices in India – by Groups and Sub-Groups (Contd.)

(Base : 2004-05= 100)

Commodities / Major Groups / Groups / Sub-Groups	Weight	2005-06	2008-09	2009-10	2009	2010					
		April-March			Oct.	May	Jun.	Jul.	Aug.	Sep. (P)	Oct. (P)
1	2	3	4	5	6	7	8	9	10	11	12
III. MANUFACTURED PRODUCTS	64.972	102.3	120.2	122.4	122.2	127.4	127.2	127.4	127.6	127.6	128.0
(A) Food Products	9.974	101.2	119.9	136.1	135.9	137.5	136.8	139.0	139.2	139.3	140.0
a. Dairy Products	0.568	99.5	122.9	138.8	141.4	152.1	152.1	151.8	151.0	150.8	150.8
b. Canning, Preserving & Processing of Fish	0.358	101.7	106.3	121.1	122.6	125.0	125.1	126.4	128.5	127.5	128.3
c. Grain Mill Products	1.340	104.8	130.1	138.0	139.1	142.1	142.6	144.3	145.3	145.0	145.1
d. Bakery Products	0.444	101.3	109.9	116.3	115.6	126.3	126.3	126.3	126.3	126.3	126.3
e. Sugar, Khandsari & Gur	2.089	108.8	106.8	161.9	164.0	158.7	152.8	159.8	157.1	156.5	157.2
f. Edible Oils	3.043	94.1	121.6	114.4	112.3	114.4	115.2	116.5	118.2	118.8	119.8
g. Oil Cakes	0.494	97.7	145.1	167.3	168.1	160.9	161.2	161.2	163.1	166.3	169.3
h. Tea & Coffee Processing	0.711	99.4	125.1	144.8	142.5	145.6	147.2	149.1	149.8	149.6	149.9
i. Manufacture of Salt	0.048	104.4	172.4	170.2	165.7	186.9	186.9	173.0	169.5	166.9	164.3
j. Other Food Products	0.879	106.5	117.4	134.8	133.4	138.9	139.5	139.7	139.9	140.0	140.2
(B) Beverages, Tobacco & Tobacco Products	1.762	104.7	128.3	136.2	135.8	143.7	143.8	143.7	144.3	143.8	144.1
a. Wine Industries	0.385	105.8	114.0	116.3	117.4	117.8	117.9	117.9	117.8	117.9	117.9
b. Malt liquor	0.153	108.8	130.1	150.5	150.5	155.2	159.8	159.8	167.0	159.8	167.1
c. Soft drinks & Carbonated Water	0.241	111.5	132.3	135.1	131.4	143.5	143.3	143.3	143.3	143.3	143.2
d. Manufacture of Bidi, Cigarettes, Tobacco & Zarda	0.983	101.9	132.7	142.0	141.8	152.2	151.7	151.4	151.4	151.6	151.0
(C) Textiles	7.326	98.9	103.2	106.7	106.4	115.4	115.5	115.7	116.1	116.0	116.9
a. Cotton Textiles	2.605	97.1	102.7	108.8	107.8	121.5	121.4	121.3	121.6	121.7	123.7
a1. Cotton Yarn	1.377	95.2	102.7	110.6	108.2	130.2	129.9	129.8	130.0	130.3	134.3
a2. Cotton Fabric	1.228	99.2	102.6	106.8	107.3	111.7	111.9	111.8	112.2	112.0	111.7

Monthly Movement of the Index of
WPI-Fuel & PowerMonthly Movement in the Index of
WPI-Manufactured Products

CURRENT
STATISTICS

Prices

No. 38: Index Numbers of Wholesale Prices in India – by Groups and Sub-Groups (Contd.)

(Base : 2004-05= 100)

Commodities / Major Groups / Groups / Sub-Groups	Weight	2005-06	2008-09	2009-10	2009	2010					
		April-March			Oct.	May	Jun.	Jul.	Aug.	Sep. (P)	Oct. (P)
1	2	3	4	5	6	7	8	9	10	11	12
b. Man Made Textiles	2.206	98.4	102.0	102.9	102.2	110.1	109.6	111.8	112.5	112.2	112.9
b1. Man Made Fibre	1.672	97.7	100.2	101.9	100.8	110.3	109.7	112.7	113.0	113.0	113.6
b2. Man Made Fabric	0.533	100.5	107.6	105.8	106.4	109.5	109.6	109.0	111.0	109.5	110.7
c. Woolen Textiles	0.294	102.2	108.3	109.4	110.0	113.3	114.8	114.8	114.6	113.7	113.5
d. Jute, Hemp & Mesta Textiles	0.261	111.6	116.6	145.8	146.3	158.0	158.3	155.6	155.9	157.2	158.0
e. Other Misc. Textiles	1.960	99.9	102.6	102.6	103.2	107.8	108.6	107.3	107.8	107.5	107.5
(D) Wood & Wood Products	0.587	105.7	130.7	143.3	146.6	147.5	146.8	147.7	148.1	149.7	148.6
a. Timber / Wooden Planks	0.181	103.0	120.5	127.2	129.3	130.0	129.9	130.3	130.5	133.5	133.6
b. Processed Wood	0.128	105.3	127.9	141.0	143.4	146.7	146.8	150.1	151.8	152.1	152.1
c. Plywood & Fibre Board	0.241	108.4	142.4	160.2	165.3	165.8	164.3	164.1	164.1	165.6	162.7
d. Others	0.038	103.2	114.8	120.2	120.5	117.9	117.7	118.4	117.7	117.5	117.9
(E) Paper & Paper Products	2.034	103.6	116.3	118.9	119.2	121.9	122.0	123.4	125.6	123.4	124.8
a. Paper & Pulp	1.019	103.2	117.1	117.2	117.1	122.6	122.8	123.2	123.3	122.8	123.1
b. Manufacture of Boards	0.550	101.6	113.7	117.7	118.9	122.9	122.2	122.1	122.4	122.5	122.4
c. Printing & Publishing	0.465	107.0	117.6	123.8	124.1	119.1	120.0	125.5	134.5	125.7	131.3
(F) Leather & Leather Products	0.835	104.3	122.3	128.4	130.0	128.3	127.8	128.7	128.8	128.2	128.2
a. Leathers	0.223	99.8	120.0	123.0	120.7	122.2	123.0	123.3	123.6	123.2	122.9
b. Leather Footwear	0.409	107.8	124.1	134.7	139.7	136.3	135.1	136.7	136.8	135.8	135.9
c. Other Leather Products	0.203	102.1	121.4	121.4	120.8	119.0	118.4	118.4	118.4	118.4	118.4
(G) Rubber & Plastic Products	2.987	101.9	117.3	118.2	117.7	122.9	123.0	123.7	123.8	124.8	124.0
a. Tyres & Tubes	0.541	103.2	125.9	130.1	129.1	140.4	141.1	141.2	144.9	148.4	145.0
a1. Tyres	0.488	103.1	125.1	129.2	128.1	139.5	140.2	140.2	144.3	148.0	144.4
a2. Tubes	0.053	104.3	132.9	138.2	138.0	148.1	149.4	150.6	150.9	152.6	150.9
b. Plastic Products	1.861	101.1	113.8	113.4	112.8	116.7	116.6	117.3	116.6	116.9	117.0
c. Rubber Products	0.584	103.2	120.7	122.4	122.8	126.7	127.1	127.9	127.0	127.9	126.9
(H) Chemicals & Chemical Products	12.018	103.8	118.1	117.8	117.2	122.6	122.4	122.1	122.6	122.5	122.9
a. Basic Inorganic Chemicals	1.187	106.4	126.2	125.0	124.3	125.2	125.8	125.3	125.0	125.2	124.8
b. Basic Organic Chemicals	1.952	103.6	118.0	115.7	116.3	123.5	122.9	121.6	122.1	122.2	122.1
c. Fertilizers & Pesticides	3.145	102.2	107.4	108.5	108.5	115.0	115.0	115.0	116.0	114.9	116.2
c1. Fertilizers	2.661	102.2	106.8	108.2	108.1	115.2	115.3	115.3	116.5	115.1	116.4
c2. Pesticides	0.483	102.2	110.5	110.6	110.5	113.6	113.6	113.4	113.3	113.7	115.0
d. Paints, Varnishes & Lacquers	0.529	104.3	117.6	117.5	115.0	122.6	122.6	123.0	123.2	123.1	123.1
e. Dyestuffs & Indigo	0.563	102.3	115.5	111.9	111.3	114.9	115.1	115.2	115.0	115.7	115.1
f. Drugs & Medicines	0.456	101.3	111.4	112.7	112.3	114.6	114.6	114.8	114.8	114.6	114.8
g. Perfumes, Cosmetics, Toiletries etc.	1.130	104.5	129.2	134.8	135.0	137.0	136.5	136.4	137.4	136.7	137.7
h. Turpentine, Plastic Chemicals	0.586	109.6	116.9	117.4	117.1	121.4	121.3	121.7	122.1	121.9	122.0
i. Polymers including Synthetic Rubber	0.970	103.0	119.6	116.3	112.1	120.9	121.1	120.8	120.7	123.3	123.4
j. Petrochemical Intermediates	0.869	105.1	133.5	127.7	127.9	134.2	132.8	131.3	131.3	131.9	132.7
k. Matches, Explosives & other Chemicals	0.629	102.7	121.6	123.8	122.8	128.0	127.8	128.4	128.5	128.3	128.2

No. 38: Index Numbers of Wholesale Prices in India – by Groups and Sub-Groups (Concl.)

(Base : 2004-05 = 100)

Commodities / Major Groups / Groups / Sub-Groups	Weight	2005-06	2008-09	2009-10	2009	2010					
		April-March			Oct.	May	Jun.	Jul.	Aug.	Sep. (P)	Oct. (P)
1	2	3	4	5	6	7	8	9	10	11	12
(I) Non-Metallic Mineral Products	2.556	103.4	131.7	140.9	141.4	145.0	143.3	145.1	144.0	144.3	144.4
a. Structural Clay Products	0.658	105.0	126.9	136.7	136.4	143.8	141.0	141.1	140.8	141.0	140.9
b. Glass, Earthenware, Chinaware & their Products	0.256	104.2	114.3	118.1	117.3	119.6	119.7	119.9	120.2	120.2	120.4
c. Cement & Lime	1.386	102.3	138.6	149.0	150.2	152.2	150.2	153.4	151.4	151.8	151.9
d. Cement, Slate & Graphite Products	0.256	104.3	123.5	129.9	131.0	133.9	135.5	135.5	136.0	135.8	136.0
(J) Basic Metals Alloys & Metals Products	10.748	101.4	137.0	125.6	125.8	135.4	134.8	133.1	133.4	133.3	133.8
a. Ferrous Metals	8.064	100.1	135.3	123.1	123.4	133.1	132.6	130.7	131.0	130.8	131.5
a1. Iron & Semis	1.563	97.9	136.9	119.0	117.6	125.2	123.4	123.2	123.3	123.7	125.5
a2. Steel: Long	1.630	100.9	144.4	128.4	127.0	140.7	139.0	134.0	134.5	134.4	135.2
a3. Steel: Flat	2.611	99.0	130.1	118.3	119.6	134.3	134.1	132.3	132.2	132.4	132.6
a4. Steel: Pipes & Tubes	0.314	97.8	123.2	115.0	117.7	117.8	117.9	117.4	116.5	116.0	116.2
a5. Stainless Steel & alloys	0.938	106.2	138.8	137.9	138.1	143.0	143.1	143.6	143.8	142.9	143.0
a6. Castings & Forgings	0.871	103.8	128.8	121.7	122.5	121.7	124.5	121.5	123.8	121.6	122.4
a7. Ferro alloys	0.137	79.9	150.2	126.8	136.5	147.4	147.1	146.8	146.6	146.6	146.6
b. Non-Ferrous Metals	1.004	111.9	150.6	145.8	144.9	153.9	152.3	152.5	152.9	153.0	153.0
b1. Aluminium	0.489	108.3	127.2	121.4	121.0	127.7	125.1	125.4	126.2	126.1	126.3
b2. Other Non-Ferrous Metals	0.515	115.2	172.8	169.0	167.6	178.7	178.2	178.2	178.2	178.6	178.3
c. Metal Products	1.680	106.6	143.4	150.5	151.5	156.5	157.2	159.2	159.6	160.3	160.7
(K) Machinery & Machine Tools	8.931	103.6	117.4	118.0	117.4	120.2	120.4	120.5	120.8	120.5	121.0
a. Agricultural Machinery & Implements	0.139	106.4	120.4	123.2	120.5	134.2	133.7	133.7	133.7	133.7	133.7
b. Industrial Machinery	1.838	108.2	129.3	130.9	130.3	137.7	138.2	138.6	138.5	138.3	139.0
c. Construction Machinery	0.045	106.4	127.4	130.5	129.6	132.1	132.1	131.8	131.8	131.8	131.8
d. Machine Tools	0.367	105.8	116.0	120.4	120.3	128.6	129.5	129.7	136.9	130.5	139.6
e. Air Conditioner & Refrigerators	0.429	96.8	102.1	111.2	112.2	111.3	111.4	111.4	111.4	111.4	111.4
f. Non-Electrical Machinery	1.026	104.6	111.4	115.1	114.7	117.6	117.8	117.9	117.9	117.8	117.8
g. Electrical Machinery, Equipment & Batteries	2.343	103.1	123.6	122.1	120.7	123.1	123.2	123.3	123.5	123.5	123.3
h. Electrical Accessories, Wires, Cables etc.	1.063	108.4	134.9	132.6	132.0	131.9	131.9	131.7	131.7	131.9	131.7
i. Electrical Apparatus & Appliances	0.337	103.0	107.1	108.1	106.3	108.6	110.3	109.3	109.5	109.7	109.7
j. Electronics Items	0.961	94.9	87.8	86.2	87.2	84.1	84.1	84.1	84.5	84.2	84.6
k. IT Hardware	0.267	93.7	87.8	86.6	86.1	87.0	87.0	87.0	87.0	87.0	87.0
l. Communication Equipments	0.118	96.3	95.8	95.7	95.8	91.9	91.9	91.9	91.9	91.9	91.9
(L) Transport Equipment & Parts	5.213	102.7	113.3	116.8	116.1	120.1	120.2	120.4	119.3	120.8	119.5
a. Automotives	4.231	102.2	111.9	115.9	115.0	120.0	120.0	120.3	119.0	120.4	119.2
b. Auto Parts	0.804	103.8	118.0	118.6	118.5	119.1	119.2	119.3	119.0	121.3	119.3
c. Other Transport Equipments	0.178	109.1	127.1	130.4	131.5	127.9	127.9	127.9	127.9	127.9	127.9

Source : Office of the Economic Adviser, Ministry of Commerce & Industry, Government of India.