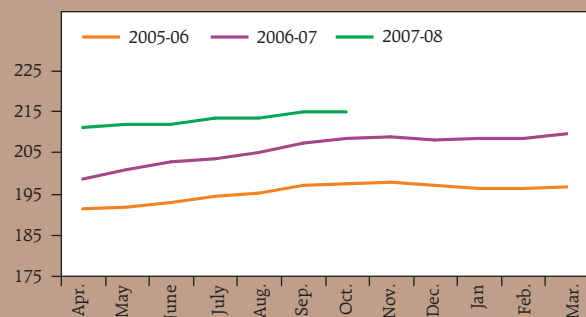


No. 39: Index Numbers of Wholesale Prices in India - by Groups and Sub-Groups (Averages)

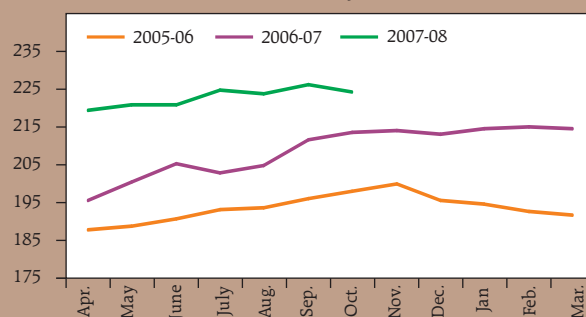
(Base : 1993-94 = 100)

Average of months/ Average of weeks ended Saturday	Weight	1994-95	2005-06	2006-07	2006	2007					
		April-March			Oct.	May	Jun.	Jul.	Aug.	Sep.	Oct.
1	2	3	4	5	6	7	8	9	10	11	12
ALL COMMODITIES	100.000	112.6	195.6	206.1	208.7	212.3	212.3	213.6	213.8	215.1	215.2
I. Primary Articles	22.025	115.8	193.6	208.6	213.4	220.9	220.6	224.5	223.8	226.0	223.9
(A) Food Articles	15.402	112.8	195.3	210.3	216.9	220.6	219.3	223.2	222.6	225.5	223.3
a. Foodgrains (Cereals+Pulses)	5.009	114.7	186.9	205.9	210.6	210.9	211.2	214.1	215.6	215.5	216.3
a1. Cereals	4.406	113.6	185.8	199.3	201.5	205.6	206.3	209.2	211.1	211.5	212.6
a2. Pulses	0.603	122.2	194.6	253.8	277.0	249.0	247.1	249.7	248.6	244.4	243.2
b. Fruits & Vegetables	2.917	108.0	219.3	227.9	251.7	244.7	232.9	245.8	243.6	258.3	242.3
b1. Vegetables	1.459	110.4	191.6	197.9	227.4	222.3	236.2	273.2	268.7	259.0	231.3
b2. Fruits	1.458	105.7	247.0	258.0	276.1	267.1	229.5	218.3	218.5	257.6	253.3
c. Milk	4.367	110.3	184.3	195.8	199.8	205.6	207.3	209.2	212.2	212.6	213.9
d. Eggs,meat & fish	2.208	116.1	217.2	226.9	219.3	245.8	246.0	244.6	232.8	233.7	234.0
e. Condiments & spices	0.662	126.2	176.9	227.9	236.8	228.9	231.3	237.8	241.1	241.0	243.9
f. Other food articles	0.239	111.6	129.9	154.3	160.5	150.1	161.2	157.4	153.8	152.9	154.3
(B) Non-Food Articles	6.138	124.2	179.1	188.2	187.5	203.4	206.0	210.9	210.5	211.5	209.5
a. Fibres	1.523	150.0	149.7	155.9	158.5	166.7	170.4	179.7	179.0	180.1	176.1
b. Oil seeds	2.666	118.5	167.1	175.7	171.2	205.1	210.7	217.2	215.5	216.8	212.9
c. Other non-food articles	1.949	112.0	218.5	230.6	232.2	229.7	227.3	226.5	228.1	228.7	231.0
(C) Minerals	0.485	104.9	322.8	413.2	427.8	452.3	448.3	437.6	429.8	424.7	424.8
a. Metallic minerals	0.297	103.8	453.1	598.7	622.9	661.8	655.4	638.0	622.7	618.2	618.2
b. Other minerals	0.188	106.7	117.0	120.4	119.8	121.4	121.2	121.0	125.2	119.2	119.3
II. Fuel, Power, Light & Lubricants	14.226	108.9	306.8	324.9	328.9	322.1	322.0	321.9	322.4	321.9	323.7
a. Coal mining	1.753	105.1	231.6	231.6	231.6	231.6	231.6	231.6	231.6	231.6	231.6
b. Minerals oils	6.990	106.1	359.8	388.1	393.6	383.5	383.3	383.0	384.0	383.1	386.9
c. Electricity	5.484	113.6	263.4	271.7	277.6	272.7	272.7	272.7	272.7	272.7	272.7
III Manufactured Products	63.749	112.3	171.5	179.0	180.2	184.8	184.9	185.7	186.1	187.5	188.0
(A) Food Products	11.538	114.1	176.9	182.5	183.1	183.7	183.5	186.4	187.0	188.2	189.6
a. Dairy products	0.687	117.0	206.5	217.3	220.4	224.3	224.6	227.4	233.1	233.1	231.9
b. Canning, preserving & processing of fish	0.047	100.0	273.1	283.7	283.1	293.8	293.8	293.8	293.8	293.8	293.8

Monthly Movement of the Index of WPI - All Commodities



Monthly Movement in the Index of WPI - Primary Articles



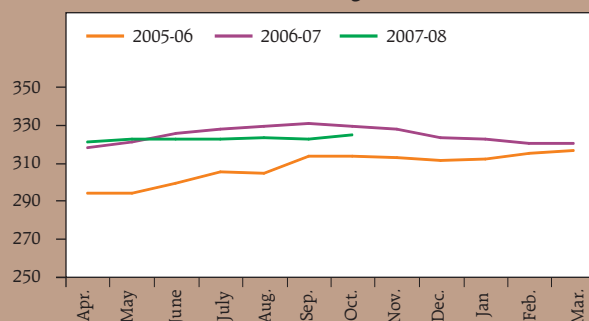
See 'Notes on Tables'.

No. 39 : Index Numbers of Wholesale Prices in India - by Groups and Sub-Groups (Averages) (Contd.)

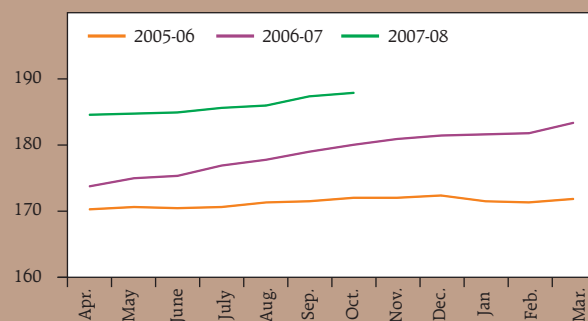
(Base : 1993-94 = 100)

Average of months/ Average of weeks ended Saturday	Weight	1994-95	2005-06	2006-07	2006	2007					
		April-March			Oct.	May	Jun.	Jul.	Aug.	Sep.	Oct.
1	2	3	4	5	6	7	8	9	10	11	12
c. Grain mill products	1.033	103.7	187.8	219.6	227.7	217.8	218.1	224.4	227.6	227.0	234.7
d. Bakery products	0.441	107.7	175.8	184.3	186.4	192.2	192.2	192.2	192.2	192.2	192.2
e. Sugar, khandsari & gur	3.929	119.1	178.8	179.8	181.7	158.7	155.7	155.6	155.1	156.0	156.4
f. Manufacture of common salts	0.021	104.8	235.1	223.0	211.8	218.0	218.0	217.6	219.3	219.3	218.3
g. Cocoa, chocolate, sugar & confectionery	0.087	118.3	177.2	183.1	183.0	188.1	188.1	188.1	188.1	188.1	188.1
h. Edible oils	2.775	110.9	146.1	154.6	154.8	166.2	168.3	171.4	171.1	171.1	172.3
i. Oil cakes	1.416	121.6	189.8	196.6	186.5	228.8	230.6	241.3	239.2	246.1	249.7
j. Tea & coffee processing	0.967	104.4	197.3	178.9	181.2	188.4	189.4	191.3	197.0	197.0	197.0
k. Other food products n.e.c.	0.154	111.6	190.1	198.1	198.7	211.4	214.7	214.7	214.7	214.7	214.7
(B) Beverages, Tobacco & Tobacco Products	1.339	118.3	226.8	243.5	245.5	263.9	264.7	265.0	265.0	265.1	269.5
a. Wine Industries	0.269	150.2	246.1	288.7	301.9	306.9	306.9	308.8	308.8	308.8	309.9
b. Malt liquor	0.043	109.1	195.9	204.1	202.7	203.7	197.0	197.0	197.0	197.0	197.0
c. Soft drinks & carbonated water	0.053	109.1	164.8	176.3	170.9	186.7	186.7	186.7	187.1	188.1	188.1
d. Manufacture of bidi, cigarettes, tobacco & zarda	0.975	110.4	226.2	236.4	235.8	258.9	260.2	260.2	260.2	260.2	265.9
(C) Textiles	9.800	118.2	129.5	132.3	134.4	132.6	132.1	132.5	132.8	132.9	132.2
a. Cotton textiles	4.215	132.7	154.3	159.1	159.8	160.5	160.1	159.5	160.1	160.5	158.3
a1. Cotton yarn	3.312	136.2	150.0	156.4	157.2	158.0	157.5	156.7	158.0	158.6	155.8
a2. Cotton cloth (Mills)	0.903	119.9	170.2	169.4	169.4	169.6	169.8	169.8	168.1	167.5	167.5
b. Man made textiles	4.719	105.9	94.7	96.2	100.0	96.5	96.7	97.8	97.7	97.7	98.8
b1. Man made fibre	4.406	105.6	91.6	93.4	97.4	93.6	93.9	95.1	95.1	95.1	96.3
b2. Man made cloth	0.313	109.9	138.6	136.2	136.3	136.2	136.2	136.2	134.4	133.8	133.8
c. Woolen textiles	0.190	132.6	181.4	174.1	170.4	170.3	170.3	170.3	170.3	170.8	170.9
d. Jute, hemp & mesta textiles	0.376	110.3	206.4	217.3	217.5	211.6	202.5	205.7	209.1	205.8	199.6
e. Other misc. textiles	0.300	109.0	199.6	189.8	191.0	184.8	184.6	182.2	181.8	182.0	182.1
(D) Wood & Wood Products	0.173	110.9	194.6	206.4	203.6	215.9	215.9	215.9	215.9	215.9	215.9
(E) Paper & Paper Products	2.044	106.1	178.4	190.7	191.4	192.6	192.8	193.8	194.8	197.7	194.8
a. Paper & pulp	1.229	108.7	157.5	170.2	171.0	172.8	173.1	174.7	176.5	176.3	176.3

Monthly Movement of the Index of the WPI - Fuel, Power, Light & Lubricants



Monthly Movement in the Index of WPI - Manufactured Products



No. 39 : Index Numbers of Wholesale Prices in India - by Groups and Sub-Groups (Averages) (Contd.)

(Base : 1993-94 = 100)

Average of months/ Average of weeks ended Saturday	Weight	1994-95	2005-06	2006-07	2006	2007					
		April-March			Oct.	May	Jun.	Jul.	Aug.	Sep.	Oct.
1	2	3	4	5	6	7	8	9	10	11	12
b. Manufacture of boards	0.237	110.9	135.3	165.6	166.9	164.3	164.3	164.3	164.3	164.8	164.8
c. Printing & publishing of newspapers, periodicals, etc.	0.578	98.5	240.6	244.6	245.0	246.3	246.3	246.3	246.3	246.3	246.3
(F) Leather & Leather Products	1.019	109.7	166.8	159.4	159.3	164.7	165.2	167.2	167.3	167.3	167.3
(G) Rubber & Plastic Products	2.388	106.4	139.1	148.2	152.4	155.0	154.6	154.5	154.6	159.0	160.2
a. Tyres & tubes	1.286	104.1	131.1	141.5	144.4	150.2	150.2	150.2	150.2	158.1	160.2
a1. Tyres	1.144	103.4	122.5	130.4	132.1	136.8	136.8	136.8	136.8	145.4	147.7
a2. Tubes	0.142	110.0	201.0	231.4	243.1	258.0	258.0	258.0	258.0	260.6	261.2
b. Plastic products	0.937	106.8	139.1	146.7	152.8	153.0	152.0	151.8	152.0	152.5	152.6
c. Other rubber & plastic products	0.165	121.0	201.5	209.8	212.4	203.8	203.6	202.8	202.8	202.8	202.8
(H) Chemicals & Chemical Products	11.931	116.6	188.3	193.9	193.6	202.0	201.8	201.9	202.8	204.1	204.8
a. Basic heavy inorganic chemicals	1.446	112.2	174.4	171.0	170.0	169.6	170.4	173.1	177.6	185.4	192.5
b. Basic heavy organic chemicals	0.455	118.7	164.2	180.2	184.0	180.7	183.9	176.2	173.9	176.5	168.5
c. Fertilisers & pesticides	4.164	117.7	171.6	171.6	171.7	172.6	172.5	172.5	172.8	173.0	173.5
c1. Fertilisers	3.689	115.8	174.9	177.2	178.6	179.6	179.4	179.4	179.8	180.0	180.6
c2. Pesticides	0.475	132.5	145.9	127.9	117.9	118.3	118.6	118.6	118.5	118.5	118.5
d. Paints, varnishes & lacquers	0.496	101.3	124.0	128.1	128.5	137.1	137.0	136.9	146.4	146.4	146.4
e. Dyestuffs & indigo	0.175	108.4	110.8	105.8	105.2	105.2	105.2	112.7	112.7	112.7	112.7
f. Drugs & medicines	2.532	129.4	278.1	293.1	292.9	315.8	315.4	315.6	315.6	315.6	315.6
g. Perfumes, cosmetics, toiletries, etc.	0.978	118.0	204.9	223.6	221.1	238.4	238.4	238.4	238.4	238.4	238.5
h. Turpentine, synthetic resins, plastic materials, ect.	0.746	107.6	131.8	133.4	128.7	148.1	143.8	142.9	141.3	144.5	144.6
i. Matches, explosives & other chemicals n.e.c.	0.940	98.3	128.8	136.0	137.4	142.6	142.6	142.6	142.5	142.2	142.2
(I) Non-Metallic Mineral Products	2.516	110.9	170.0	191.8	191.1	204.1	205.0	206.3	207.5	210.4	210.6
a. Structural clay products	0.230	100.0	189.7	195.2	195.8	211.7	211.7	211.7	211.7	211.7	211.7
b. Glass, earthenware, chinaware & their products	0.237	113.3	159.4	160.7	156.6	168.6	168.6	168.6	168.6	168.6	168.6
c. Cement	1.731	112.4	166.7	197.3	196.8	211.6	213.3	215.1	215.6	219.8	220.0
d. Cement, slate & graphite products	0.319	108.8	181.6	182.9	182.3	182.3	182.3	182.3	188.9	189.8	189.7

No. 39: Index Numbers of Wholesale Prices in India - by Groups and Sub-Groups (Averages) (Contd.)

(Base : 1993-94 = 100)

Average of months/ Average of weeks ended Saturday	Weight	1994-95	2005-06	2006-07	2006	2007					
		April-March			Oct.	May	Jun.	Jul.	Aug.	Sep.	Oct.
1	2	3	4	5	6	7	8	9	10	11	12
(J) Basic Metals Alloys & Metals Products	8.342	108.4	218.7	233.3	237.4	244.5	244.6	244.5	243.5	247.0	247.4
a. Basic Metals & Alloys	6.206	107.0	232.4	236.3	240.0	246.8	247.4	247.7	246.6	252.6	253.5
a1. Iron & Steel	3.637	106.0	250.7	254.4	259.2	267.9	268.1	268.8	267.5	276.7	277.6
a2. Foundries for Casting, Forging & Structural	0.896	106.7	231.8	228.5	232.1	238.3	238.3	238.3	238.3	293.3	242.1
a3. Pipes, Wires Drawing & Others	1.589	109.5	193.1	204.1	205.3	208.2	210.1	209.6	208.3	210.2	209.9
a4. Ferro Alloys	0.085	104.5	186.2	148.5	150.7	154.1	154.1	154.1	156.2	156.2	156.2
b. Non-Ferrous Metals	1.466	115.9	194.7	258.3	266.0	276.0	274.3	271.8	270.6	264.8	263.3
b1. Aluminium	0.853	114.7	210.9	253.6	251.5	259.0	257.3	252.3	252.3	245.8	241.4
b2. Other Non-Ferrous Metals	0.613	117.7	172.2	264.8	286.1	299.8	298.0	298.9	296.0	291.4	293.8
c. Metal Products	0.669	105.0	144.1	149.8	150.2	153.8	153.8	154.7	155.5	156.4	156.8
(K) Machinery & Machine Tools	8.363	106.0	147.5	155.6	156.1	164.6	165.1	166.0	166.7	167.7	167.5
a. Non-electrical machinery & parts	3.379	108.6	188.3	194.8	195.7	198.0	197.8	198.0	198.4	199.8	200.4
a1. Heavy machinery & parts	1.822	111.0	199.2	201.8	203.1	205.2	204.9	205.0	205.0	207.7	208.9
a2. Industrial machinery for textiles, etc.	0.568	108.5	245.6	255.2	255.2	259.9	259.9	260.2	260.9	260.9	260.9
a3. Refrigeration & other non-electrical machinery	0.989	104.3	135.2	147.3	148.0	149.2	149.0	149.4	150.4	149.9	150.0
b. Electrical machinery	4.985	104.2	119.6	129.0	129.3	141.9	142.9	144.3	145.2	145.9	145.3
b1. Electrical industrial machinery	1.811	105.2	142.4	150.4	152.3	155.7	156.6	159.2	162.8	163.9	162.0
b2. Wires & cables	1.076	109.0	145.7	179.0	177.9	226.4	229.4	231.3	231.3	233.7	233.8
b3. Dry & wet batteries	0.275	105.8	130.5	148.5	149.1	161.6	161.6	162.2	162.8	162.8	163.4
b4. Electrical apparatus & appliances	1.823	100.1	80.0	75.3	74.6	75.2	75.4	75.4	74.1	73.7	73.7
(L) Transport Equipment & Parts	4.295	107.4	159.9	162.4	163.2	163.8	164.2	164.7	164.9	165.3	165.9
a. Locomotives, railway wagons & parts	0.318	105.3	124.8	125.2	127.5	122.2	127.8	131.6	131.6	131.6	135.3
b. Motor vehicles, motorcycles, scooters, bicycles & parts	3.977	107.6	162.7	165.4	166.0	167.1	167.0	167.3	167.6	168.0	168.3

Source : Office of the Economic Adviser, Ministry of Commerce & Industry, Government of India.