

I. Output

India's GDP growth during the first quarter of 2009-10 at 6.1 per cent represents a modest recovery from the 5.8 per cent growth registered during the preceding two quarters, though still lower than 7.8 per cent growth that was achieved in the first quarter of 2008-09 and the 8.8 per cent average growth experienced during 2003-08. The sequential recovery over the previous quarter was driven by notable turnaround in industrial output. During April to August 2009-10, both industry and core infrastructure sectors have shown accelerated growth and few lead indicators of services sector activities also suggest some pick up in growth momentum. The deficient monsoon coupled with recent floods in some States and their expected adverse impact on the kharif agricultural production, however, entail downside risk for the overall growth prospects.

I.1 After a phase of distinct deceleration in growth during the second half of 2008-09, the Indian economy exhibited signs of recovery with higher growth in GDP during the first quarter of 2009-10 and acceleration in the pace of recovery in industrial output and core infrastructure activities. According to the estimates released by the Central Statistical Organisation (CSO) in August 2009, real GDP growth during the first quarter of 2009-10 was placed at 6.1 per cent, which is higher than 5.8 per cent recorded during the preceding two quarters of 2008-09. The growth during the first quarter of 2009-10 was supported by rebound in industrial activity, particularly the turnaround in manufacturing sector (from the negative growth in the previous quarter)

and relative resilience of growth in services, notwithstanding the recent deceleration. The real GDP growth during the first quarter of 2009-10, however, was lower than 7.8 per cent recorded in the first quarter of 2008-09, which reflects the persistence of the impact of the synchronised global recession, notwithstanding the emerging signs of recovery. (Table 1.1).

Agricultural Situation

1.2 Deficient monsoon has emerged as the key factor in dampening the pace of recovery in India's growth in the near-term. The South-West Monsoon had arrived in

Kerala on May 23, 2009, *i.e.*, one week ahead of the normal schedule. The progress of monsoon, however, got delayed significantly and with every delay, the rainfall deficiency and the prospects of drought like conditions also increased. The cumulative rainfall during the season (up to September 30, 2009) over the entire country has been 23 per cent below normal as against 1 per cent below normal during the corresponding period of the previous year. The shortfall in rainfall as per the foodgrains production weighted index of the Reserve Bank has been higher (27 per cent below normal) as compared to the corresponding period of the previous year

Table 1.1: Growth Rates of Real GDP[@]

Sector	2007-08*	2008-09#	2008-09				2009-10
			Q1	Q2	Q3	Q4	
			Q1	Q2	Q3	Q4	
1	2	3	4	5	6	7	8
1. Agriculture and Allied Activities	4.9 (17.8)	1.6 (17.0)	3.0	2.7	-0.8	2.7	2.4
2. Industry	7.4 (19.2)	2.6 (18.5)	5.1	4.8	1.6	-0.5	4.2
2.1 Mining and Quarrying	3.3	3.6	4.6	3.7	4.9	1.6	7.9
2.2 Manufacturing	8.2	2.4	5.5	5.1	0.9	-1.4	3.4
2.3 Electricity, Gas and Water Supply	5.3	3.4	2.7	3.8	3.5	3.6	6.2
3. Services	10.8 (63.0)	9.4 (64.5)	10.0	9.8	9.5	8.4	7.7
3.1 Trade, Hotels, Restaurants, Transport, Storage and Communication	12.4	9.0	13.0	12.1	5.9	6.3	8.1
3.2 Financing, Insurance, Real Estate and Business Services	11.7	7.8	6.9	6.4	8.3	9.5	8.1
3.3 Community, Social and Personal Services	6.8	13.1	8.2	9.0	22.5	12.5	6.8
3.4 Construction	10.1	7.2	8.4	9.6	4.2	6.8	7.1
Real GDP at Factor Cost	9.0 (100)	6.7 (100)	7.8	7.7	5.8	5.8	6.1

Memo:

(Amount in Rupees crore)

Real GDP at Factor Cost (1999-2000)	31,29,717	33,39,375					
GDP at current market prices	47,23,400	53,21,753					

@: At 1999-2000 Prices

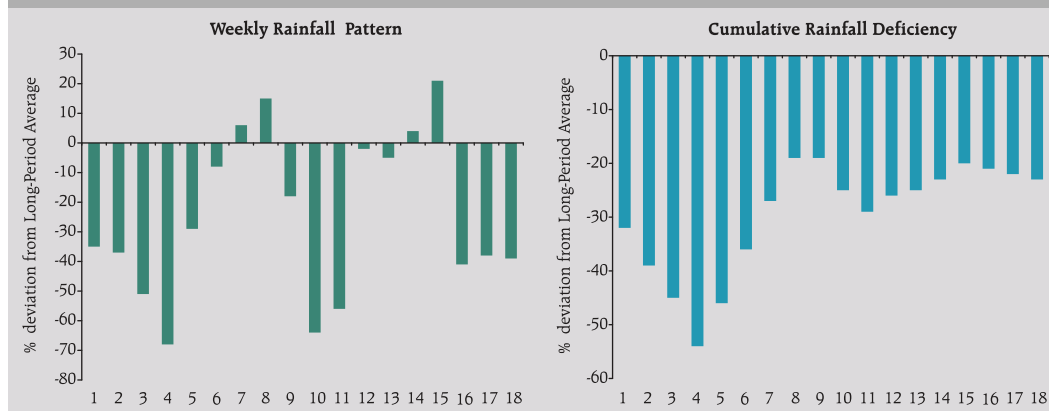
*: Quick Estimates.

#: Revised Estimates.

Note : Figures in parenthesis indicate shares in real GDP.

Source : Central Statistical Organisation.

Chart I.1: South-West Monsoon: 2009 (June 1 to September 30)

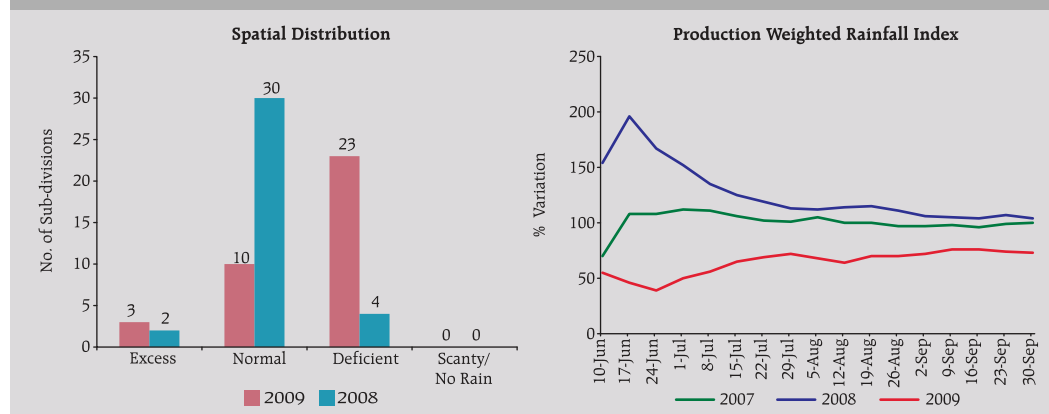


(4 per cent above normal). The deficiency in rainfall during the South-West monsoon season has exceeded the revised forecast of the India Meteorological Department (IMD) issued in August, according to which rainfall during the season (June to September, 2009) was likely to be below normal at 93 per cent of the Long Period Average (with a model error of ± 4.0 per cent). The temporal distribution of the rainfall activity shows that the initial concerns about shortfall in June rainfall receded somewhat in July, which helped to improve the sowing position. The rainfall turned deficient again

during the first half of August 2009, before picking up subsequently since the middle of the month (Chart I.1).

I.3 The spatial distribution of rainfall reveals that of the 36 meteorological sub-divisions, cumulative rainfall has been excess/normal in 13 sub-divisions (32 sub-divisions last year) (Chart I.2). The pick up in rainfall activity since mid-August 2009 has resulted in substantial improvement in the country's water reservoir level, though it continues to remain below last year's level. As on October 22, 2009, the total live

Chart I.2: South-West Monsoon: 2009 (June 1 to September 30)



water storage in the 81 major reservoirs of the country was 64.0 per cent of the Full Reservoir Level (FRL) (72.0 per cent during the corresponding period last year).

1.4 As on September 30, 2009, around 300 districts have been declared drought hit, partially or wholly, in 12 States. During the season, flood incidents were also reported in some States, *viz.*, Karnataka, Assam, Meghalaya, Arunachal Pradesh, West Bengal, Orissa, Bihar, Jharkhand, Uttar Pradesh, Uttarakhand, Haryana, Punjab, Himachal Pradesh, Gujarat, Maharashtra, Madhya Pradesh, Kerala and Andhra Pradesh.

1.5 The deficient South-West monsoon has impacted the *khharif* sowing, which is about 5.4 per cent below that of the last year. Latest sowing position indicates that sowing of all crops during the current *khharif* season as on October 16, 2009 was 92 per cent of the normal level (Table 1.2). Sowing of most

pulses and cotton are higher than last year levels, while the sowing of coarse cereals and jute remained the same as last year, though paddy sowing has been substantially affected (16 per cent below last year's level). Other crops whose sowing has been affected somewhat include oilseeds and sugarcane. Considering that *Khharif* paddy is an important crop accounting for about 86 per cent of total rice production and 36 per cent of total foodgrains production in India, the shortfall in its sowing could be expected to depress the overall foodgrains production during 2009-10.

1.6 The impact of the overall deficiency in rainfall during South-West monsoon season has to be assessed in the context of the pick up in monsoon in the later part of August and in September that could help standing crops in improving their yield. Besides, rainfall has been more deficient in the irrigated belt of the country like Punjab and

Table 1.2: Progress of Area Sown under *Khharif* Crops: 2009-10

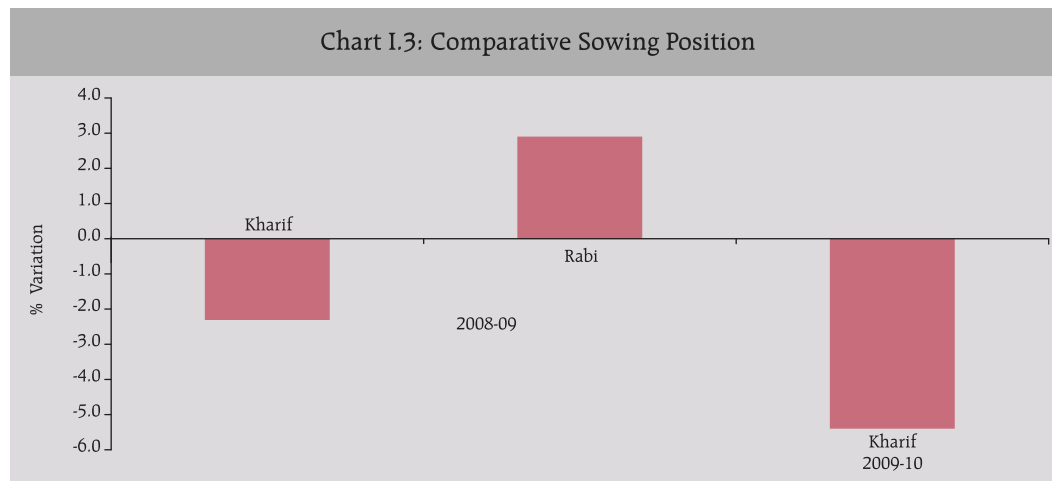
(Million hectares)					
Crop	Normal Area	Area Coverage (as on October 16, 2009)			Percentage change
		2008	2009	Absolute variation	
1	2	3	4	5	6
Rice	39.2	38.8	32.7	-6.1	-15.7
Coarse Cereals	23.0	20.6	20.7	0.1	0.3
<i>of which:</i>					
Bajra	9.7	8.5	8.5	0.0	0.2
Jowar	3.9	2.9	3.1	0.2	6.6
Maize	6.8	7.1	7.1	0.1	0.9
Total Pulses	11.2	9.6	10.1	0.5	5.6
Total Oilseeds	16.9	18.4	17.5	-1.0	-5.2
<i>of which:</i>					
Groundnut	5.4	5.3	4.4	0.9	-16.6
Soyabean	7.8	9.6	9.6	0.0	-0.2
Sugarcane	4.4	4.4	4.3	-0.1	-2.9
Cotton	8.7	8.5	9.6	1.1	13.4
Jute	0.8	0.7	0.7	0.0	-2.0
All Crops	104.2	101.1	95.7	-5.4	-5.4

Source : Ministry of Agriculture, Government of India.

Haryana where availability of irrigation, particularly in the snow fed Northern river basin could offset some of the potential loss in output. Shortfall in rice sowing during this *kharif* is being partly compensated in some parts of the country by sowing of short duration Boro rice (post *kharif*) and shortfall in groundnut sowing is being partly offset by sowing of Toria that could be sown even in the late *kharif* season. Moreover, delayed withdrawal of South-West monsoon augurs well for *rabi* crops, particularly winter wheat and oilseeds on account of high moisture retention in the soil. In addition, Indian agriculture is substantially diversified now. *Kharif* 'cereals, pulses and oilseeds' contribute only around 20 per cent to total agricultural output. *Rabi* contributes another 20 per cent to the overall agricultural GDP. The balance 60 per cent comes from allied sector comprising of horticulture, livestock and fisheries, which has been growing at above 5 per cent during last few years.

I.7 Moreover, in recent years, the share of *rabi* output in total foodgrains production has been increasing and during 2008-09, the *rabi* accounted for almost half of the overall

foodgrains production. During 2008-09, despite shortfall in *kharif* sowing (-2.3 per cent), the foodgrains production touched an all-time peak, mainly because of higher *rabi* sowing (2.9 per cent), which compensated for the loss in *kharif* output (Chart I.3). In view of the drought like situation prevailing in some of the States, the Government of India has initiated several timely measures to overcome the shortfall in *kharif* production, which include provision of incentives for supplemental irrigation facilities *via* the diesel subsidy in States having more than 50 per cent deficiency in rainfall; planned efforts to increase *rabi* production through ensuring availability of seeds, fertilisers and other inputs to farmers and issuing several policies/advisories with regard to water conservation techniques and providing flexibility to States in the use of funds under various central schemes. In view of the above, there is a possibility of *rabi* production compensating somewhat for the loss in *kharif* output as in the previous year, provided that North-East monsoon and climatic conditions remain favourable during the *rabi* season of 2009-10.



I.8 According to IMD, during the Post Monsoon Season (October-December) cumulative rainfall for the period October 1 to 21, 2009 was 12 per cent above normal as compared with 40 per cent below normal during the corresponding period of the previous year. The spatial distribution of rainfall reveals that of the 36 meteorological sub-divisions, cumulative rainfall was excess/normal in 26 sub-divisions (5 sub-divisions last year).

I.9 According to the Fourth Advance Estimates, the total foodgrains production during 2008-09 reached to a record level of 233.9 million tonnes, about 3 million tonnes higher than the previous year (Table 1.3). The increase in foodgrains production could

be mainly attributed to increase in the output of rice and wheat.

Food Management

I.10 The procurement of rice and wheat during 2009-10 (up to October 20, 2009) was higher than that in the corresponding period of the previous year (Table 1.4). As a result, the total stock of foodgrains with the Food Corporation of India (FCI) and other Government agencies reached a peak of 54.8 million tonnes as on June 1, 2009. Since then, the stocks have declined on account of off-take being higher than the procurement and were at 44.3 million tonnes as on October 1, 2009. The stocks of both rice and wheat are, however, much higher than their norms.

Table 1.3: Agricultural Production
(Million tonnes)

Crop	2007-08	2008-09@
1	2	3
Rice	96.7	99.2
<i>Kharif</i>	82.7	84.6
<i>Rabi</i>	14.0	14.6
Wheat	78.6	80.6
Coarse Cereals	40.8	39.5
<i>Kharif</i>	31.9	28.3
<i>Rabi</i>	8.9	11.1
Pulses	14.8	14.7
<i>Kharif</i>	6.4	4.8
<i>Rabi</i>	8.4	9.9
Total Foodgrains	230.8	233.9
<i>Kharif</i>	121.0	117.7
<i>Rabi</i>	109.8	116.2
Total Oilseeds	29.8	28.2
<i>Kharif</i>	20.7	17.9
<i>Rabi</i>	9.0	10.3
Sugarcane	348.2	271.3
Cotton #	25.9	23.2
Jute and Mesta ##	11.2	10.4

@ : Fourth Advance Estimates.

: Million bales of 170 kgs. each.

##: Million bales of 180 kgs. each.

Source : Ministry of Agriculture, Government of India.

Industrial Performance

I.11 During the current financial year, industrial production has exhibited recovery from the loss of growth momentum witnessed during the second half of 2008-09. After a short phase of deceleration, the industrial growth turned negative in December 2008 and thereafter turned positive, but remained depressed till the end of 2008-09. Since April 2009, the recovery has been more visible and industrial output clocked double digit growth in August 2009, which is the highest recorded since November 2007. The growth in industrial production at 5.8 per cent during the current financial year 2009-10 (April-August) exceeded the growth recorded during the corresponding period of previous year (4.8 per cent) on account of higher growth in June-August 2009 (Chart I.4 and Table 1.5). The recovery in industrial

MONETARY POLICY STATEMENT 2009-10

Macroeconomic and
Monetary Developments
Second Quarter Review 2009-10

Table 1.4: Management of Food Stocks

(Million tonnes)

Month	Opening Stock of Foodgrains			Procurement of Foodgrains			Foodgrains Off-take					Closing Stock	Norms
	Rice	Wheat	Total	Rice	Wheat	Total	PDS	OWS	OMS-Domestic	Exports	Total		
1	2	3	4	5	6	7	8	9	10	11	12	13	14
2008-09	13.8	5.8	19.8	32.8	22.7	55.5	34.9	3.4	1.2	0.0	39.5	35.6	
2009-10@	21.6 (13.8)	13.4 (5.8)	35.6 (19.8)	11.1 (11.3)	25.4 (22.7)	36.5 (33.9)	14.3 (11.2)	0.9 (0.9)	0.0 (0.0)	0.0 (0.0)	15.2 (12.1)	N.A. N.A.	
2008													
January	11.5	7.7	19.2	4.5	0.0	4.5	2.9	0.3	0.0	0.0	3.2	21.4	20.0
April	13.8	5.8	19.8	1.1	14.2	15.3	2.7	0.0	0.0	0.0	2.8	30.7	16.2
2009													
January	17.6	18.2	36.2	4.8	0.0	4.8	3.0	0.2	0.3	0.0	3.4	37.4	20.0
February	20.2	16.8	37.4	3.7	0.0	3.7	3.0	0.3	0.2	0.0	3.6	37.1	
March	21.3	15.3	37.1	2.3	0.0	2.3	2.9	0.4	0.0	0.0	3.9	35.6	
April	21.6	13.4	35.6	1.4	19.4	20.8	3.3	0.2	0.0	0.0	3.5	51.8	16.2
May	21.4	29.8	51.8	1.9	4.4	6.4	3.6	0.2	0.0	0.0	3.9	54.8	
June	20.4	33.1	54.8	1.3	1.1	2.4	3.3	0.4	0.0	0.0	3.7	53.2	
July	19.6	32.9	53.2	1.4	0.4	1.8	N.A.	N.A.	N.A.	N.A.	N.A.	51.0	26.9
August	18.8	31.6	51.0	0.8	0.0	0.8	N.A.	N.A.	N.A.	N.A.	N.A.	47.8	
September	17.2	30.1	47.8	0.4	0.1	0.5	N.A.	N.A.	N.A.	N.A.	N.A.	44.3	
October*	15.4	28.5	44.3	4.0	0.0	4.0	N.A.	N.A.	N.A.	N.A.	N.A.	N.A.	16.2

PDS: Public Distribution System. OWS: Other Welfare Schemes. OMS: Open Market Sales. N.A.: Not Available.

@ : Procurement up to October 20, Off-take up to July 31.

* : Procurement up to October 20.

Note : 1. Closing stock figures may differ from those arrived at by adding the opening stocks and procurement and deducting off-take, as stocks include coarse grains also.

2. Figures in parenthesis indicate procurement/offtake of foodgrains during corresponding period of 2008-09.

Source : Ministry of Consumer Affairs, Food and Public Distribution, Government of India.

growth has been broad based with acceleration in growth of all the three sectors, *viz.*, mining, electricity and manufacturing. The acceleration in the manufacturing sector in April-August 2009 was on account of increase in the production

Chart I.4: Growth in Index of Industrial Production (Y-o-Y)

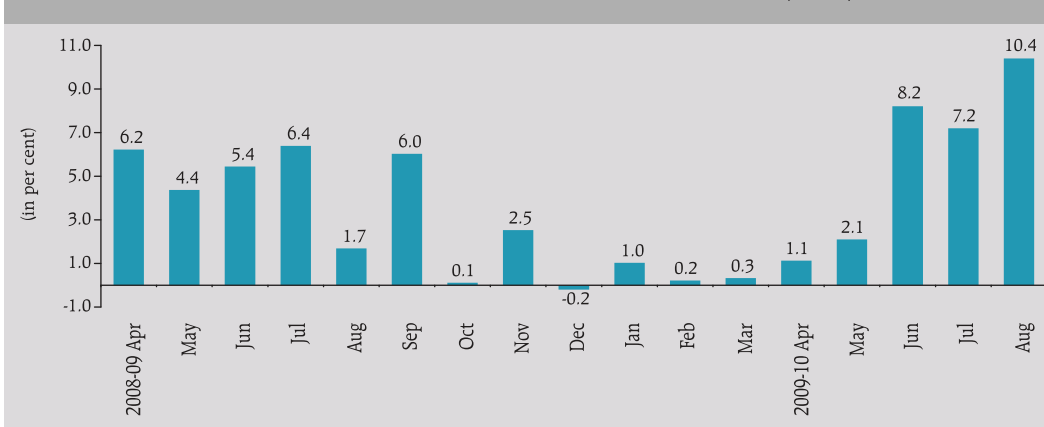


Table 1.5: Index of Industrial Production: Sectoral and Use-Based Classification of Industries

(Per cent)							
Industry Group	Weight in the IIP	Growth Rate			Weighted Contribution #		
		April-March 2008-09	April-August		April-March 2008-09	April-August	
			2008-09	2009-10 P		2008-09	2009-10 P
1	2	3	4	5	6	7	8
Sectoral							
Mining	10.5	2.6	3.5	8.4	6.3	4.8	9.3
Manufacturing	79.4	2.7	5.1	5.5	85.3	91.1	81.2
Electricity	10.2	2.8	2.3	6.6	8.3	4.0	9.5
Use-Based							
Basic Goods	35.6	2.6	3.7	6.7	28.4	23.0	34.5
Capital Goods	9.3	7.3	8.3	3.2	34.1	20.6	6.8
Intermediate Goods	26.5	-1.9	1.0	9.2	-18.4	5.5	41.5
Consumer Goods (a+b)	28.7	4.7	7.6	3.1	54.2	49.2	17.4
a) Consumer Durables	5.4	4.5	5.7	18.1	12.4	8.9	23.8
b) Consumer Non-durables	23.3	4.8	8.3	-1.5	41.7	40.3	-6.4
General	100.0	2.7	4.8	5.8	100.0	100.0	100.0

P : Provisional. # : Figures may not add up to 100 due to rounding off.
Source: Central Statistical Organisation.

of 'rubber, plastic, petroleum products', 'textile products', 'wool, silk and man-made fibre textiles', 'wood and wood products', 'machinery and equipment other than transport equipment', 'non-metallic mineral products', 'basic metal and alloy industries', 'leather and leather fur products' and 'other manufacturing industries' (Table 1.6).

Table 1.6: Performance of Manufacturing Industry Groups (April-August 2009-10)

	Negative	Deceleration	Acceleration
1	2	3	4
1.	Food Products	Transport equipment and parts	Wood and wood products; furnitures and fixtures
2.	Jute and other vegetable fibre textiles (except cotton)	Chemicals and chemical products	Non-metallic mineral products
3.	Metal products and parts	Paper and paper products	Textile products
4.	Beverages, tobacco and related products	Cotton textiles	Rubber, plastic, petroleum and coal products
5.			Other manufacturing industries
6.			Wool, silk and man-made fibre textiles;
7.			Basic metal and alloy industries
8.			Machinery and equipment
9.			Leather and fur products
Combined Weight in the IIP	14.9	23.5	41.0

I.12 In terms of use-based classification, while there was noticeable acceleration in basic and intermediate goods segments, the performance of capital and consumer goods still remained sluggish during April-August 2009-10 over the corresponding period of last year. The continuous rise in intermediate goods production indicates pick up in upstream industries and strength in inventory investments. The growth in the capital goods sector, which recovered with robust growth in June 2009 from negative territory during March-May 2009, fell sharply in July 2009, before recouping subsequently with buoyant growth in August 2009. Despite robust growth in the durables goods segment, the growth in the consumer goods remained weak during April-August 2009-10, reflecting mainly the contraction in non-durables output. Non-durables segment has, however, displayed recovery with positive growth in June-August 2009.

I.13 Out of 17 two-digit manufacturing industry groups, eight industry groups accounting for 38.4 per cent weight in the IIP recorded decelerated/negative growth during April-August 2009-10 (Table 1.7).

I.14 The basic goods sector has manifested steady acceleration during April-August 2009-10, mainly on account of improved performance in electricity, non-metallic mineral products like cement and basic metals. After decline in growth for seven consecutive months (August 2008 to February 2009), intermediate goods sector has recovered strongly since March 2009 and showed a double digit growth in August 2009. Demand seems to have picked up in 2009-10 for intermediate products such as

'wool, silk and man-made fibre textiles', 'wood and wood products', 'non metallic mineral products', 'metal products and parts except machinery equipment' and 'machinery and equipment other than transport equipment. On the contrary, the sharp deceleration in the growth witnessed in the capital goods sector in April-August 2009 as compared to the same period last year has been on account of lower growth in production of 'machinery and equipment other than transport equipment' and 'transport equipment and parts'. The trend in production of capital goods has been volatile, reflecting some uncertainty in investment outlook and the competition from imports.

I.15 The positive growth in consumer non-durables during July and August 2009 was on account of 'cotton textiles', 'wool and man-made fibre textiles', 'paper and paper products', 'leather and fur products', 'rubber, plastic, petroleum and coal products' and 'machinery and equipment other than transport equipment'. The trends in consumer durables show steady rise in production since January 2009 driven by the production of giant tubes, tractor tyres, window type air conditioners, refrigerators, washing/laundry machines, electric fans, telephone instruments, TV receivers, passenger cars, motor cycles, *etc.*

Infrastructure

I.16 During the current financial year 2009-10 (April-August), the core infrastructure sector recorded higher growth at 4.8 per cent compared to 3.3 per cent during the corresponding period of the previous year

Table 1.7: Growth of Manufacturing Industry Groups

(Per cent)							
Industry Group	Weight in the IIP	Growth Rate			Weighted Contribution #		
		April-March 2008-09	April-August		April-March 2008-09	April-August	
			2008-09	2009-10 P		2008-09	2009-10 P
1	2	3	4	5	6	7	8
1. Food products	9.08	-9.7	-2.5	-12.6	-28.1	-3.1	-13.7
2. Beverages, tobacco and related products	2.38	16.2	22.2	-3.3	30.7	22.7	-3.6
3. Cotton textiles	5.52	-1.9	1.2	0.7	-2.8	1.0	0.5
4. Wool, silk and man-made fibre textiles	2.26	0.0	-1.2	11.9	0.0	-0.7	5.8
5. Jute and other vegetable fibre textiles (except cotton)	0.59	-10.1	-6.5	-16.4	-1.1	-0.4	-0.9
6. Textile products (including wearing apparel)	2.54	5.7	4.7	9.5	6.9	3.1	5.9
7. Wood and wood products, furniture and fixtures	2.70	-9.6	-6.7	11.8	-5.3	-2.1	3.0
8. Paper and paper products and printing, publishing and allied Industries	2.65	1.9	3.1	2.7	2.0	1.9	1.5
9. Leather and leather and fur products	1.14	-6.9	0.8	1.3	-2.1	0.1	0.2
10. Chemicals and chemical products (except products of petroleum and coal)	14.00	4.1	8.1	5.0	29.0	31.8	18.9
11. Rubber, plastic, petroleum and coal products	5.73	-1.5	-4.2	13.2	-3.5	-5.3	14.1
12. Non-metallic mineral products	4.40	1.2	0.7	7.6	2.7	0.9	8.5
13. Basic metal and alloy industries	7.45	4.0	6.6	7.1	14.8	13.2	13.3
14. Metal products and parts (except machinery and equipment)	2.81	-4.0	-0.8	-0.2	-3.1	-0.3	-0.1
15. Machinery and equipment other than transport equipment	9.57	8.8	8.3	9.5	53.2	26.1	28.7
16. Transport equipment and parts	3.98	2.5	11.2	9.1	6.1	14.1	11.3
17. Other manufacturing industries	2.56	0.4	-4.0	10.8	0.6	-2.9	6.6
Manufacturing – Total	79.36	2.7	5.1	5.5	100.0	100.0	100.0

P: Provisional. # : Figures may not add up to 100 due to rounding off.

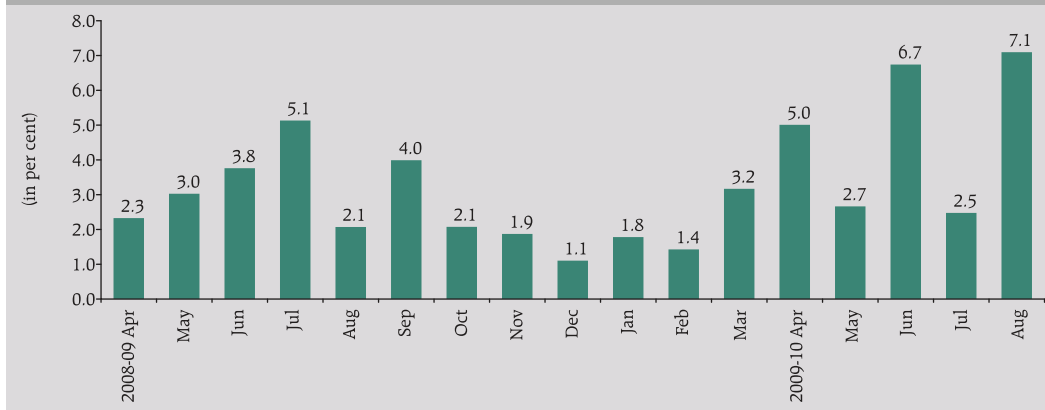
Source: Central Statistical Organisation.

led by acceleration in coal, cement, and electricity (Chart I.5). The production of crude oil and petroleum refinery products, however, recorded a decline. The production of finished steel witnessed decelerated growth during the period (Chart I.6).

Services Sector

I.17 The services sector recorded a lower growth of 7.7 per cent during the first quarter of 2009-10 compared with the double digit growth of 10.0 per cent during the corresponding period of last year. The

Chart I.5: Growth in Infrastructure Industries (Y-o-Y)



growth in sub-sectors such as 'trade, hotels, transport and communication' and 'construction', exceeded the growth in the preceding two quarters but remained lower than the first quarter of 2008-09. However, 'financing, insurance, real estate and business services' recorded acceleration in growth compared to the first quarter of 2008-09, reflecting the improved conditions in the financial markets (see Table 1.1).

I.18 The slowdown in the services sector is reflected in its contribution to real GDP

growth, which receded to 4.9 per cent in the first quarter of 2009-10 from 6.3 per cent during the corresponding period of the previous year (Table 1.8).

I.19 The lead indicators of services sector activity for 2009-10, so far, suggest decline in growth in respect of foreign tourist arrivals and production of commercial vehicles, while most of the other lead indicators pertaining to transport services also display a subdued outlook. The production of cement has, however, shown

Chart I.6: Sector-wise Growth in Infrastructure Industries

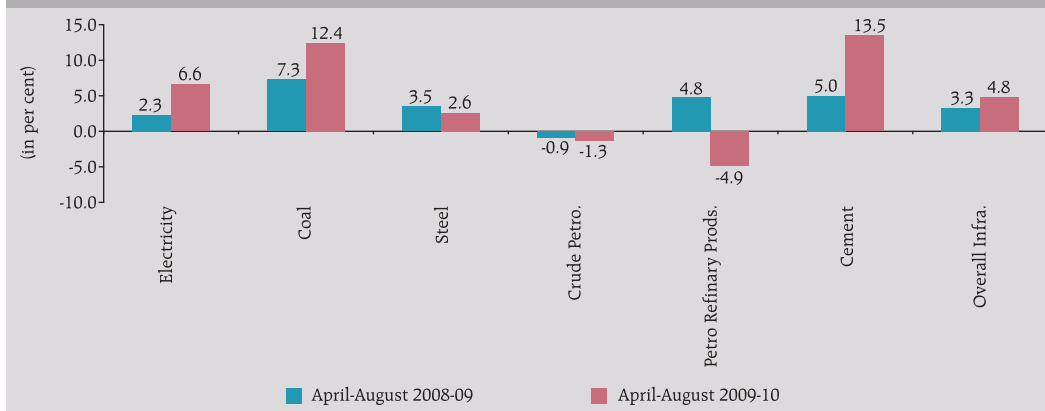


Table 1.8: Contribution of Services to Real GDP Growth

(Per cent)					
Year/Quarter	Construction	Trade, Hotels, Transport and Communication	Financing, Insurance, Real Estate and Business Services	Community, Social and Personal Services	Total Services
1	2	3	4	5	6
2005-06	1.1	3.0	1.5	1.0	6.7
2006-07	0.8	3.5	1.9	0.8	6.9
2007-08	0.7	3.4	1.7	0.9	6.7
2008-09 RE	0.5	2.5	1.1	1.7	5.9
2008-09 : Q1	0.6	3.5	1.0	1.0	6.3
: Q2	0.7	3.4	1.0	1.3	6.4
: Q3	0.3	1.6	1.2	2.7	5.7
: Q4	0.5	1.8	1.3	1.7	5.4
2009-10 : Q1	0.5	2.3	1.2	0.9	4.9

RE : Revised Estimates.

Source: Central Statistical Organisation.

a turnaround along with some buoyancy in steel output, indicating growing momentum in construction activities. There is also pick up in the growth in respect of passengers

handled at domestic terminals (Table 1.9). Telecommunication services remain buoyant on considerable growth in the cell phone connections.

Table 1.9: Indicators of Services Sector Activity

(Growth in per cent)				
	2007-08	2008-09	April-September	
			2008-09	2009-10
1	2	3	4	5
Tourist arrivals	12.2	-2.5	8.9	-2.8
Commercial vehicles production#	4.8	-24.0	4.4	-7.4
Railway revenue earning freight traffic	9.0	4.9	18.9	7.5
Cell phone connections ^	38.3	44.8	24.9	62.3
Cargo handled at major ports ^	12.0	2.1	8.4	1.8
Civil aviation				
Export cargo handled ^	7.5	3.4	7.7	1.5
Import cargo handled ^	19.7	-5.7	6.2	-9.3
Passengers handled at international terminals ^	11.9	3.8	7.8	1.8
Passengers handled at domestic terminals ^	20.6	-12.1	-5.1	2.4
Cement ##	7.8	7.5	5.0	13.5
Steel ##	6.8	0.6	3.5	2.6

: Leading Indicator for Transportation.

^ : Data for 2009-10 pertains to April-August.

: Leading Indicator for construction and data for 2009-10 pertains to April-August.

Source : Ministry of Tourism; Ministry of Commerce and Industry; Ministry of Statistics and Programme Implementation; Reserve Bank of India; and Centre for Monitoring Indian Economy.

MONETARY POLICY STATEMENT 2009-10

Macroeconomic and
Monetary Developments
Second Quarter Review 2009-10

I.20 In sum, the aggregate supply conditions as reflected in the growth of GDP indicate that although there is a recovery from the slowdown of the second half of 2008-09, the pace of revival remains subdued. The deficient and uneven precipitation during the South-West monsoon season coupled with recent floods in some States have considerably increased the downside risks for the *kharif* production during 2009-10. Nonetheless, given the recent past experience and the proactive measures already initiated by the Government, the *rabi* production may partly reverse the shortfall in *kharif* production, if climatic

and North-East monsoon conditions remain favourable during the *rabi* season. During the current financial year 2009-10 (April-August), the industrial production has staged a recovery (5.8 per cent) from the loss of growth momentum that it witnessed during the second half of 2008-09. Similarly, the core infrastructure sector during 2009-10 (April-August) has also displayed higher growth (4.8 per cent) over the comparable period last year, underpinned by considerable acceleration in coal, cement, and electricity. Some of the lead indicators for the services sector also show signs of momentum in growth.