

Annex 2 Methodologies

2.1 Corporate sector

2.1.I Corporate sector stability indicator and map

The corporate sector stability indicator and map have been constructed using the following method:

Data: The balance sheet data of non-government non-financial public limited companies.

Frequency: Annual (1992-93 to 2011-12). From 2012-13 to 2015-16, the half-yearly balance sheet data is used for the analysis.

The ratios used under each of the dimensions are given in Table 1.

Dimensions	Ratios
Profitability	RoA(Gross Profit/Total Assets) #; Operating Profit/Sales #; Profit After Tax/Sales #.
Leverage	Debt/ Assets, Debt/ Equity; (Debt is taken as Total Borrowings).
Sustainability	Interest Coverage Ratio (EBIT to interest expenses) #; interest expenses/total expenditure;.
Liquidity	Quick Assets/ Current Liabilities (quick ratio) #;.
Turn-Over	Total Sales / Total Assets #.

Negatively related to risk.

First, the ratios were converted into standard normal variate [$z = \frac{x-\mu}{\sigma}$]. Then, z's were bounded between 0 and 1 using relative distance transformation [$d = \frac{z-\min(z)}{\max(z)-\min(z)}$]. For (#) negatively related ratios (to risk), one's complement was used. For each dimension a composite index was derived as a simple average of relevant d's (principal component analysis also gives equal weights). The Map is constructed using composite index for each dimension.

The overall corporate sector stability indicator is a weighted average of 5 dimensions. The weights are obtained using principal component analysis (PCA). The derived weights for 5 dimensions are as follows:

Profitability	Leverage	Sustainability	Liquidity	Turn-Over
25%	25%	25%	10%	15%

2.1.II Assessment of impact of weakness in debt servicing capacity of NGNF companies on bank credit

1. The Basic Statistical Returns (BSR) give the data on total bank credit of scheduled commercial banks (SCBs) and also the bank credit to private non-financial corporations [i.e. non-government non-financial (NGNF) public and private limited companies]. From this, the share of bank credit to NGNF companies out of total bank credit was calculated.
2. Using a sample of Ministry of Corporate Affairs (MCA) database, the ratio of bank borrowing of "weak" NGNF companies to total bank borrowings of all NGNF companies in the sample was worked out.

Similarly the ratio of bank borrowings of "leveraged weak" NGNF companies to total bank borrowings of the sample was also worked out.

3. In order to assess the vulnerability of bank credit due to "weak" and "leveraged weak" companies, the ratios arrived at in paragraph 2 (above) was applied on the BSR credit data (paragraph 1 above). Thus the share of bank credit to "weak" companies as a percentage of total bank credit and share of bank credit to "leveraged weak" companies as a percentage of total bank credit were arrived at.

2.2 Scheduled commercial banks

2.2.1 Banking stability map and indicator

The banking stability map and indicator present an overall assessment of changes in underlying conditions and risk factors that have a bearing on the stability of the banking sector during a period. The five composite indices used in the banking stability map and indicator represent the five dimensions of soundness, asset-quality, profitability, liquidity and efficiency. The ratios used for constructing each composite index are given in Table 2.

Dimension	Ratios			
Soundness	CRAR #	Tier-I Capital to Tier-II Capital #	Leverage Ratio as Total-Assets to Capital and Reserves	
Asset-Quality	Net NPAs to Total-Advances	Gross NPAs to Total-Advances	Sub-Standard-Advances to Gross NPAs #	Restructured-Standard-Advances to Standard-Advances
Profitability	Return on Assets #	Net Interest Margin #	Growth in Profit #	
Liquidity	Liquid-Assets to Total-Assets #	Customer-Deposits to Total-Assets #	Non-Bank-Advances to Customer-Deposits	Deposits maturing within-1-year to Total Deposits
Efficiency	Cost to Income	Business (Credit + Deposits) to Staff Expenses #	Staff Expenses to Total Expenses	

Note: # Negatively related to risk.

Each composite index, representing a dimension of bank functioning, takes values between zero and 1. Each index is a relative measure during the sample period used for its construction, where a higher value means the risk in that dimension is high. Therefore, an increase in the value of the index in any particular dimension indicates an increase in risk in that dimension for that period as compared to other periods. For each ratio used for a dimension, a weighted average for the banking sector is derived, where the weights are the ratio of individual bank assets to total banking system assets. Each index is normalised for the sample period using the following formula:

$$\frac{X_t - \min(X_t)}{\max(X_t) - \min(X_t)}$$

Where, X_t is the value of the ratio at time t. A composite index of each dimension is calculated as a weighted average of normalised ratios used for that dimension where the weights are based on the marks assigned

for assessment for the CAMELS rating. The banking stability indicator is constructed as a simple average of these five composite indices.

2.2.II Macro-stress testing

To ascertain the resilience of banks against macroeconomic shocks, a macro-stress test for credit risk was conducted. Here, the credit risk indicator was modelled as a function of macroeconomic variables, using various econometric models that relate the select banking system aggregates to macroeconomic variables. The time series econometric models used were: (i) multivariate regression to model system level slippage ratio; (ii) Vector Autoregression (VAR) to model system level slippage ratio; (iii) quantile regression to model system level slippage ratio; (iv) multivariate regression to model bank group-wise slippage ratio; (v) VAR to model bank group-wise slippage ratio; and (vi) multivariate regressions for sectoral GNPA. The banking system aggregates include current and lagged values of slippage ratio, while macroeconomic variables include GVA at basic price growth, weighted average lending rate (WALR), CPI (combined) inflation, exports-to-GDP ratio $\left(\frac{EX}{GDP}\right)$, current account balance to GDP ratio $\left(\frac{CAB}{GDP}\right)$ and gross fiscal deficit-to-GDP ratio $\left(\frac{GFD}{GDP}\right)$.

While multivariate regression allows evaluating the impact of select macroeconomic variables on the banking system's GNPA and capital, the VAR model reflects the impact of the overall economic stress situation on the banks' capital and GNPA ratios, and also takes into account the feedback effect. In these methods, the conditional mean of slippage ratio¹ is estimated and it is assumed that the impact of macro-variables on credit quality will remain the same irrespective of the level of the credit quality, which may not always be true. In order to relax this assumption, quantile regression was adopted to project credit quality, wherein conditional quantile was estimated instead of the conditional mean.

The modelling framework

The following multivariate models were run to estimate the impact of macroeconomic shocks on the GNPA ratio and/or slippage ratio (SR):

System level models

The system level GNPA were projected using three different but complementary econometric models: multivariate regression, VAR (which takes into account the feedback impact of credit quality to macro-variables and interaction effects) and quantile regression (which can deal with tail risks and takes into account the non-linear impact of macroeconomic shocks). The average of projections derived from these models was used for calculating the impact on CRAR.

- *Multivariate regression*

The analysis was carried out on the slippage ratio at the aggregate level for the commercial banking system as a whole.

$$SR_t = \alpha_1 - \beta_1 SR_{t-2} - \beta_2 \Delta GVA_{t-1} + \beta_3 WALR_{t-1} - \beta_4 \left(\frac{EX}{GDP}\right)_{t-1} + \beta_5 \Delta CPI_{t-4} + \beta_6 \left(\frac{GFD}{GDP}\right)_{t-2} + \beta_7 \text{Dummy}$$

where, $\alpha_1, \beta_1, \beta_2, \beta_3, \beta_4, \beta_5, \beta_6$ and $\beta_7 > 0$.

¹ Slippages are fresh accretion to NPAs during a period. Slippage Ratio = Fresh NPAs/Standard Advances at the beginning of the period.

- *VAR model*

In notational form, mean-adjusted VAR of order p (VAR(p)) can be written as:

$$y_t = A_1 y_{t-1} + \dots + A_p y_{t-p} + u_t ; t=0,1,2,3,\dots$$

where, $y_t = (y_{1t}, \dots, y_{kt})$ is a $(K \times 1)$ vector of variables at time t, the A_i ($i=1,2,\dots,p$) are fixed $(K \times K)$ coefficient matrices and $u_t = (u_{1t}, \dots, u_{kt})$ is a K-dimensional white noise or innovation process.

In order to estimate the VAR model, slippage ratio, WALR, CPI (combined) inflation, GVA at basic price growth and gross fiscal deficit-to-GDP ratio were selected. The appropriate order of VAR was selected based on minimum information criteria as well as other diagnostics and suitable order was found to be 2. Accordingly, VAR of order 2 (VAR(2)) was estimated and the stability of the model was checked based on roots of AR characteristic polynomial. Since all roots were found to be inside the unit circle, the selected model was found to fulfil the stability condition. The impact of various macroeconomic shocks was determined using the impulse response function of the selected VAR.

- *Quantile regression*

In order to estimate the conditional quantile of slippage ratio at 0.8, the following quantile regression was used:

$$SR_t = \alpha_1 + \beta_1 SR_{t-1} - \beta_2 \Delta GVA_{t-2} + \beta_3 WALR_{t-1} - \beta_4 \left(\frac{EX}{GDP} \right)_{t-3} + \beta_5 \Delta CPI_{t-5} + \beta_6 \text{Dummy}$$

Bank group level models

The bank groups-wise SR were projected using two different but complementary econometric models: multivariate regression and VAR. The average of projections derived from these models was used to calculate the impact on CRAR.

- *Multivariate regression*

In order to model the slippage ratio of various bank groups, the following multivariate regressions for different bank groups were used:

Public Sector Banks:

$$SR_t = \alpha_1 + \beta_1 SR_{t-1} - \beta_2 \Delta GVA_{t-2} + \beta_3 WALR_{t-1} - \beta_4 \left(\frac{CAB}{GDP} \right)_{t-3} + \beta_5 \Delta CPI_{t-1} + \beta_6 \left(\frac{GFD}{GDP} \right)_{t-2}$$

Private Sector Banks:

$$SR_t = \alpha_1 + \beta_1 SR_{t-1} - \beta_2 \Delta GVA_{t-1} + \beta_3 RWALR_{t-2} - \beta_4 \left(\frac{EX}{GDP} \right)_{t-1}$$

Foreign Banks:

$$SR_t = \alpha_1 + \beta_1 SR_{t-1} + \beta_2 WALR_{t-2} + \beta_3 \Delta CPI_{t-1} - \beta_4 \left(\frac{EX}{GDP} \right)_{t-5} + \beta_5 \text{Dummy}$$

- *VAR model*

In order to model the slippage ratio of various bank groups, different VAR models of different orders were estimated based on the following macro variables:

Public Sector Banks: GVA at basic price growth, CPI (combined)-inflation, WALR, CAB to GDP Ratio and GFD to GDP ratio of order 2.

Private Sector Banks: GVA at basic price growth, real WALR and Exports to GDP ratio of order 1.

Foreign Banks: CPI (combined)-inflation, WALR and CAB to GDP ratio of order 2.

Sector level models

Sectoral multivariate regression

The impact of macroeconomic shocks on various sectors was assessed by employing multivariate regression models using the aggregate GNPA ratio for each sector separately. The dependent variables consisted of lagged GNPA, GVA at basic price growth (aggregate or sectoral), CPI (combined)-inflation, WALR and export to GDP ratio.

Estimation of GNPA from slippages

Derivation of GNPA from slippage ratios, which were projected from the afore mentioned credit risk econometric models, were based on the following assumptions: credit growth of 11 per cent; recovery rate of 9.6 per cent, 7.9 per cent, 6.5 per cent and 5.0 per cent during March, June, September and December quarters respectively; write-off rates of 5.5 per cent, 4.8 per cent, 3.7 per cent and 4.6 per cent during March, June, September and December respectively.

Projection of PAT

The various components of profit after tax (PAT) of banks, like, interest income, other income, operating expenses and provisions were projected using different time series econometric models (as given below). Finally, PAT was estimated using the following identity:

$$PAT = NII + OOI - OE - Provisions - Income Tax$$

where, NII is Net Interest Income, OOI is Other Operating Income and OE is Operating Expenses.

Net Interest Income (NII): NII is the difference between interest income and interest expense and was projected using the following regression model:

$$LNII_t = -\alpha_1 + \beta_1 \times LNII_{t-1} + \beta_2 \times LNGVA_SA_{t-1} + \beta_3 \times Adv_Gr_{t-1} + \beta_4 \times Spread_t$$

LNII is log of NII. LNGVA_SA is seasonally adjusted log of nominal GVA. Adv_Gr is the y-o-y growth rate of advances. Spread is the difference between average interest rate earned by interest earning assets and average interest paid on interest bearing liabilities.

Other Operating Income (OOI): The OOI of SCBs was projected using the following regression model:

$$LOOI_t = -\alpha_1 + \beta_1 \times LOOI_{t-1} + \beta_2 \times LNGDP_SA_t$$

LOOI is log of OOI.

Operating Expense (OE): The OE of SCBs was projected using the Autoregressive Moving Average (ARMA) model.

Provision: The required provisioning was projected using the following regression:

$$P_Adv_t = \alpha_1 + \beta_1 \times P_Adv_{t-1} - \beta_2 \times RGVA_Gr_{t-2} + \beta_3 \times GNPA_{t-1} - \beta_4 \times Dummy$$

P_Adv is provisions to total advances ratio. RGVA_Gr is the y-o-y growth rate of real GVA. GNPA is gross non-performing advances to total advances ratio. Dummy is a time dummy.

Income Tax: The applicable income tax was taken as 35 per cent of profit before tax, which is based on the past trend of ratio of income tax to profit before tax.

Impact of GNPA's on capital adequacy

Finally, impact on CRAR was estimated based on the PAT estimated as mentioned in the previous section. RWA growth was assumed at 11 per cent under the baseline, 13 per cent under medium risk and 15 per cent under severe risk scenarios. Regulatory capital growth was assumed to remain at the minimum by assuming minimum mandated transfer of 25 per cent of the profit to the reserves account without considering any capital infusion by the stake holders. The projected values of the GNPA's ratio were translated into capital ratios using the 'balance sheet approach', under which capital in the balance sheet is affected via provisions and net profits.

2.2.III Single factor sensitivity analysis – Stress testing

As a part of quarterly surveillance, stress tests are conducted covering credit risk, interest rate risk, liquidity risk etc. and the resilience of commercial banks in response to these shocks is studied. The analysis is done on individual SCBs as well as on the system level.

Credit risk

To ascertain the resilience of banks, the credit portfolio was given a shock by increasing GNPA levels for the entire portfolio as well as for few select sectors. For testing the credit concentration risk, default of the top individual borrower(s) and the largest group borrower(s) was assumed. The analysis was carried out both at the aggregate level as well as at the individual bank level. The assumed increase in GNPA's was distributed across sub-standard, doubtful and loss categories in the same proportion as prevailing in the existing stock of NPAs. However, for credit concentration risk using top (individual as well as group) borrowers, the additional GNPA's under the assumed shocks were considered to fall into sub-standard category only. In the case of credit concentration risk using stressed borrowers, the additional GNPA's under the assumed shocks were considered to slip directly into the loss category. The provisioning norms used for these stress tests were based on existing average prescribed provisioning for different asset categories. The provisioning requirements were taken as 25 per cent, 75 per cent and 100 per cent for sub-standard, doubtful and loss advances respectively. These norms were applied on additional GNPA's calculated under a stress scenario. As a result of the assumed increase in GNPA's, loss of income on the additional GNPA's for one quarter was also included in total losses, in addition to the incremental provisioning requirements. The estimated total losses were deducted from banks' capital and additional provisioning requirements so derived multiplied by average risk weighted assets were deducted from banks' risk weighted assets and stressed capital adequacy ratios were computed.

Interest rate risk

Under assumed shocks of the shifting of the INR yield curve, there could be losses on account of the fall in value of the portfolio or decline in income. These estimated losses were reduced from the banks' capital to arrive at stressed CRAR.

For interest rate risk in the trading portfolio (HFT + AFS), a duration analysis approach was considered for computing the valuation impact (portfolio losses). The portfolio losses on these investments were calculated for each time bucket based on the applied shocks. The resultant losses/gains were used to derive the impacted CRAR. In a separate exercise for interest rate shocks in the HTM portfolio, valuation losses were calculated for each time bucket on interest bearing assets using the duration approach. The valuation impact for the tests on the HTM portfolio was calculated under the assumption that the HTM portfolio would be marked-to-market.

Evaluation of the impact of interest rate risk on the banking book was done through the 'income approach'. The impact of shocks were assessed by estimating income losses on the exposure gap of rate sensitive assets and liabilities, excluding AFS and HFT portfolios, for one year only for each time bucket separately. This reflects the impact on the current year profit and loss.

Liquidity risk

The aim of the liquidity stress tests is to assess the ability of a bank to withstand unexpected liquidity drain without taking recourse to any outside liquidity support. Various scenarios depict different proportions (depending on the type of deposits) of unexpected deposit withdrawals on account of sudden loss of depositors' confidence along with a demand for unutilised portion of sanctioned/committed/guaranteed credit lines (taking into account the undrawn working capital sanctioned limit, undrawn committed lines of credit and letters of credit and guarantees). The stress tests were carried out to assess banks' ability to fulfil the additional and sudden demand for credit with the help of their liquid assets alone.

Assumptions used in the liquidity stress tests are given below:

- It is assumed that banks will meet stressed withdrawal of deposits or additional demand for credit through sale of liquid assets only.
- The sale of investments is done with a haircut of 10 per cent on their market value.
- The stress test is done under a 'static' mode.

Bottom-up stress testing

Bottom-up sensitivity analysis was performed by 15 select scheduled commercial banks. A set of common scenarios and shock sizes were provided to the select banks. The tests were conducted using March 2016 data. Banks used their own methodologies for calculating losses in each case.

Stress testing the derivatives portfolios of select banks

The stress testing exercise focused on the derivatives portfolios of a representative sample set of top 22 banks in terms of notional value of the derivatives portfolios. Each bank in the sample was asked to assess the impact of stress conditions on their respective derivatives portfolios.

In case of domestic banks, the derivatives portfolio of both domestic and overseas operations was included. In case of foreign banks, only the domestic (Indian) position was considered for the exercise. For

derivatives trade where hedge effectiveness was established it was exempted from the stress tests, while all other trades were included.

The stress scenarios incorporated four sensitivity tests consisting of the spot USD/INR rate and domestic interest rates as parameters

Table 3: Shocks for sensitivity analysis

Domestic interest rates		
Shock 1	Overnight	+2.5 percentage points
	Up to 1yr	+1.5 percentage points
	Above 1yr	+1.0 percentage points

Domestic interest rates		
Shock 2	Overnight	-2.5 percentage points
	Up to 1yr	-1.5 percentage points
	Above 1yr	-1.0 percentage points

Exchange rates		
Shock 3	USD/INR	+20 per cent

Exchange rates		
Shock 4	USD/INR	-20 per cent

2.3 Scheduled urban co-operative banks

Single factor sensitivity analysis – Stress testing

Credit risk

Stress tests on credit risk were conducted on SUCBs using their asset portfolios as at end March 2016. The tests were based on a single factor sensitivity analysis. The impact on CRAR was studied under following four different scenarios, using the historical standard deviations (SD).

- Scenario I: 1 SD shock on GNPA (classified into sub-standard advances).
- Scenario II: 2 SD shock on GNPA (classified into sub-standard advances).
- Scenario III: 1 SD shock on GNPA (classified into loss advances).
- Scenario IV: 2 SD shock on GNPA (classified into loss advances).

Liquidity risk

A liquidity stress test based on a cash flow basis in the 1-28 days time bucket was also conducted, where mismatch [negative gap (cash inflow less cash outflow)] exceeding 20 per cent of outflow was considered stressful.

- Scenario I: Cash outflows in the 1-28 days time bucket goes up by 50 per cent (no change in cash inflows).
- Scenario II: Cash outflows in the 1-28 days time bucket goes up by 100 per cent (no change in cash inflows).

2.4 Non-banking financial companies

Single factor sensitivity analysis – Stress testing

Credit risk

Stress tests on credit risk were conducted on non-banking financial companies (including both deposit taking and non-deposit taking and systemically important) using their asset portfolios as of March 2016. The tests were based on a single factor sensitivity analysis. The impact on CRAR was studied under three different scenarios, based on historical SD:

- Scenario I: GNPA increased by 0.5 SD from the current level.
- Scenario II: GNPA increased by 1 SD from the current level.
- Scenario III: GNPA increased by 3 SD from the current level.

The assumed increase in GNPA was distributed across sub-standard, doubtful and loss categories in the same proportion as prevailing in the existing stock of GNPA. The additional provisioning requirement was adjusted from the current capital position. The stress test was conducted at individual NBFC level as well as at the aggregate level.

2.5 Interconnectedness – Network analysis

Matrix algebra is at the core of the network analysis, which uses the bilateral exposures between entities in the financial sector. Each institution's lendings to and borrowings from all other institutions in the system are plotted in a square matrix and are then mapped in a network graph. The network model uses various statistical measures to gauge the level of interconnectedness in the system. Some of the important measures are given below:

Connectivity: This statistic measures the extent of links between the nodes relative to all possible links in a complete graph. For a directed graph, denoting the total number of out degrees to equal $K = \sum_{i=1}^N k_i$ and N as the total number of nodes, connectivity of a graph is given as $\frac{K}{N(N-1)}$.

Cluster coefficient: Clustering in networks measures how interconnected each node is. Specifically, there should be an increased probability that two of a node's neighbours (banks' counterparties in case of a financial network) are neighbours to each other also. A high clustering coefficient for the network corresponds with high local interconnectedness prevailing in the system. For each bank with k_i neighbours the total number of all possible directed links between them is given by $k_i(k_i-1)$. Let E_i denote the actual number of links between agent i 's k_i neighbours, viz. those of i 's k_i neighbours who are also neighbours. The clustering coefficient C_i for bank i is given by the identity:

$$C_i = \frac{E_i}{k_i(k_i-1)}$$

The clustering coefficient (C) of the network as a whole is the average of all C_i 's:

$$C = \frac{\sum_{i=1}^N C_i}{N}$$

Shortest path length: This gives the average number of directed links between a node and each of the other nodes in the network. Those nodes with the shortest path can be identified as hubs in the system.

In-betweenness centrality: This statistic reports how the shortest path lengths pass through a particular node.

Eigenvector measure of centrality: Eigenvector centrality is a measure of the importance of a node (bank) in a network. It describes how connected a node's neighbours are and attempts to capture more than just the number of out degrees or direct 'neighbours' that a node has. The algorithm assigns relative centrality scores to all nodes in the network and a nodes centrality score is proportional to the sum of the centrality scores of all nodes to which it is connected. For a $N \times N$ matrix there will be N different eigen values, for which an eigenvector solution exists. Each bank has a unique eigen value, which indicates its importance in the system. This measure is used in the network analysis to establish the systemic importance of a bank and by far it is the most crucial indicator.

Tiered network structures: Typically, financial networks tend to exhibit a tiered structure. A tiered structure is one where different institutions have different degrees or levels of connectivity with others in the network. In the present analysis, the most connected banks (based on their eigenvector measure of centrality) are in the innermost core. Banks are then placed in the mid-core, outer core and the periphery (the respective concentric circles around the centre in the diagrams), based on their level of relative connectivity. The range of connectivity of the banks is defined as a ratio of each bank's in degree and out degree divided by that of the most connected bank. Banks that are ranked in the top 10 percentile of this ratio constitute the inner core. This is followed by a mid-core of banks ranked between 90 and 70 percentile and a 3rd tier of banks ranked between the 40 and 70 percentile. Banks with a connectivity ratio of less than 40 per cent are categorised as the periphery.

Colour code of the network chart: The blue balls and the red balls represent net lender and net borrower banks respectively in the network chart. The colour coding of the links in the tiered network diagram represents the borrowing from different tiers in the network (for example, the green links represent borrowings from the banks in the inner core).

Solvency contagion analysis

The contagion analysis is in nature of stress test where the gross loss to the banking system owing to a domino effect of one or more banks failing is ascertained. We follow the round by round or sequential algorithm for simulating contagion that is now well known from Furfine (2003). Starting with a trigger bank i that fails at time 0, we denote the set of banks that go into distress at each round or iteration by D_q , $q = 1, 2, \dots$. For this analysis, a bank is considered to be in distress when its core CRAR goes below 6 per cent. The net receivables have been considered as loss for the receiving bank.

Liquidity contagion analysis

While the solvency contagion analysis assesses potential loss to the system owing to failure of a net borrower, liquidity contagion estimates potential loss to the system due to the failure of a net lender. The analysis is conducted on gross exposures between banks. The exposures include fund based and derivatives ones. The basic assumption for the analysis is that a bank will initially dip into its liquidity reserves or buffers to tide over a liquidity stress caused by the failure of a large net lender. The items considered under

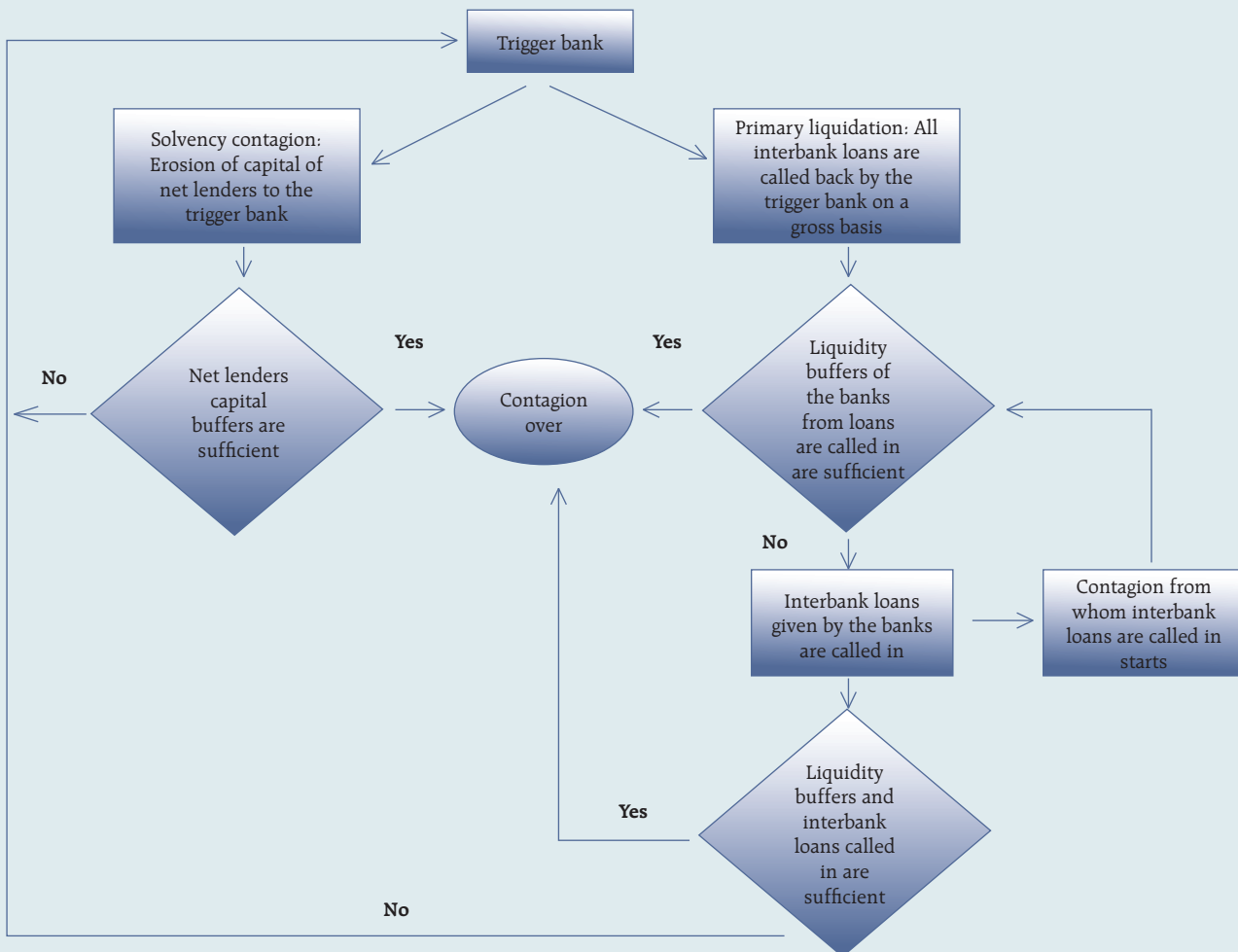
liquidity reserves are: (a) excess CRR balance; (b) excess SLR balance; (c) available marginal standing facility; and (d) available export credit refinance. If a bank is able to meet the stress with liquidity buffers alone, then there is no further contagion.

However, if the liquidity buffers alone are not sufficient, then a bank will call in all loans that are 'callable', resulting in a contagion. For the analysis only short-term assets like money lent in the call market and other very short-term loans are taken as callable. Following this, a bank may survive or may be liquidated. In this case there might be instances where a bank may survive by calling in loans, but in turn might propagate a further contagion causing other banks to come under duress. The second assumption used is that when a bank is liquidated, the funds lent by the bank are called in on a gross basis, whereas when a bank calls in a short-term loan without being liquidated, the loan is called in on a net basis (on the assumption that the counterparty is likely to first reduce its short-term lending against the same counterparty).

Joint solvency-liquidity contagion analysis

A bank typically has both positive net lending positions against some banks while against some other banks it might have a negative net lending position. In the event of failure of such a bank, both solvency and liquidity contagion will happen concurrently. This mechanism is explained by the following flowchart:

Flowchart of Joint Liquidity-Solvency contagion due to a bank coming under distress



The trigger bank is assumed to have failed for some endogenous reason, i.e., it becomes insolvent and thus impacts all its creditor banks. At the same time it starts to liquidate its assets to meet as much of its obligations as possible. This process of liquidation generates a liquidity contagion as the trigger bank starts to call back its loans.

The lender/creditor banks that are well capitalised will survive the shock and will generate no further contagion. On the other hand, those lender banks whose capital falls below the threshold will trigger a fresh contagion. Similarly, the borrowers whose liquidity buffers are sufficient will be able to tide over the stress without causing further contagion. But some banks may be able to address the liquidity stress only by calling in short term assets. This process of calling in short term assets will again propagate a contagion.

The contagion from both the solvency and liquidity side will stop/stabilise when the loss/shocks are fully absorbed by the system with no further failures.